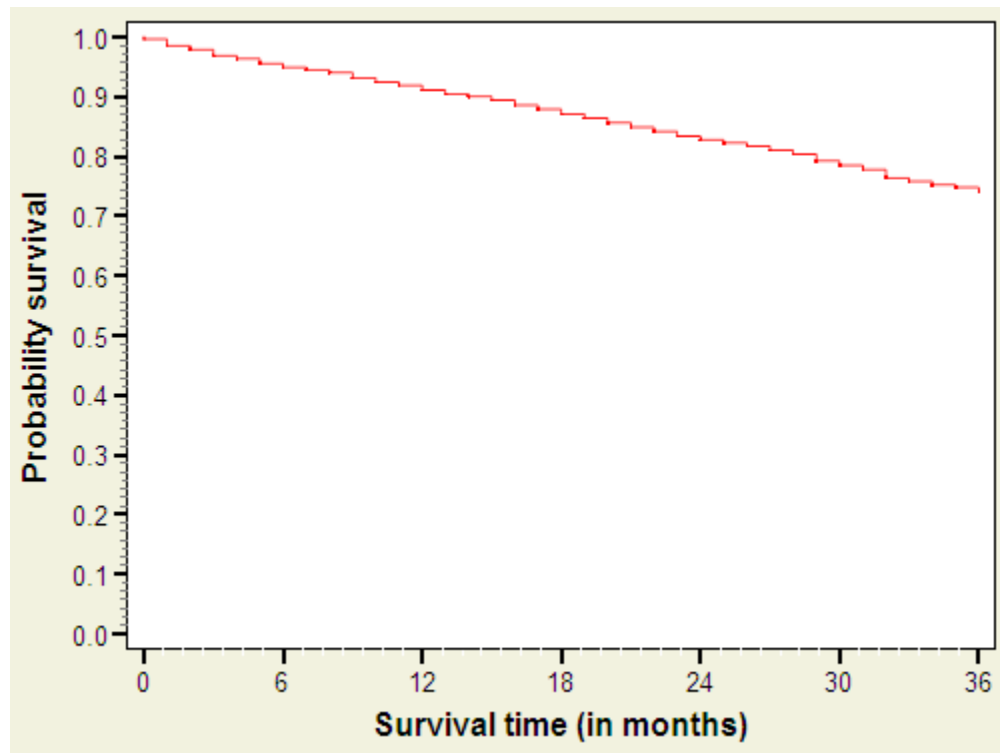
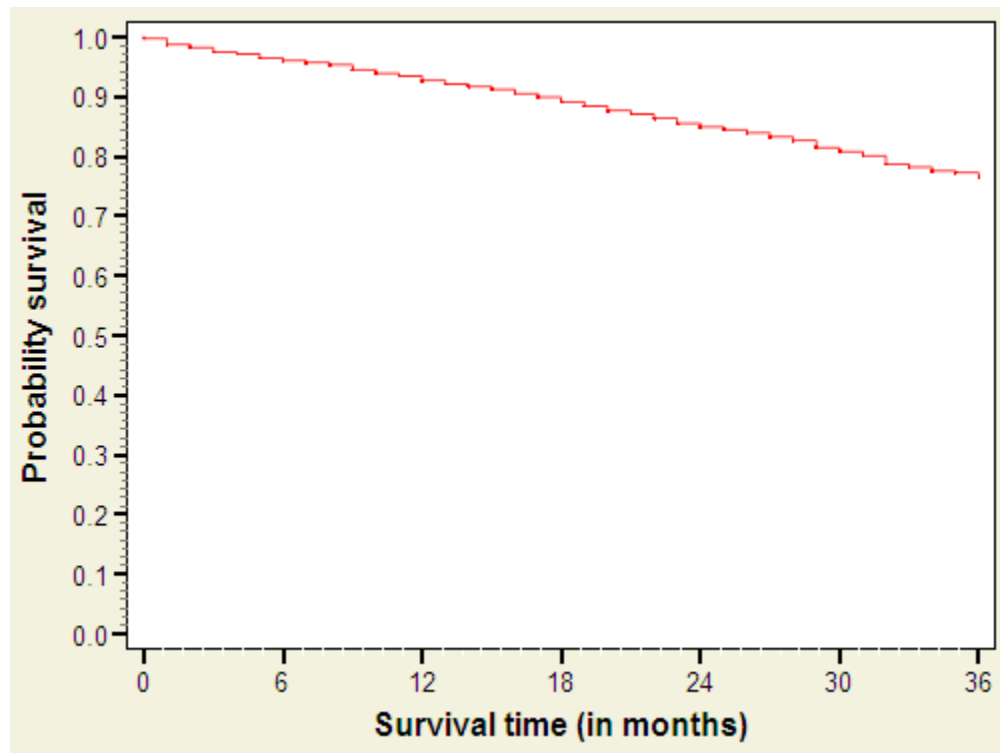


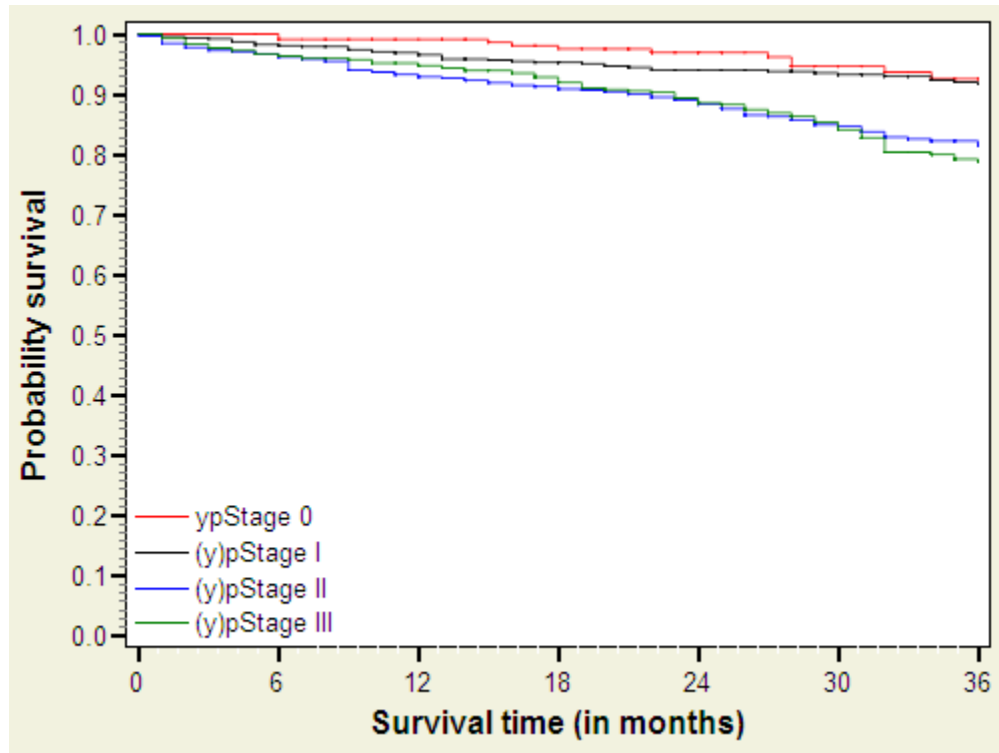
Observed survival (all patients, all treatments)



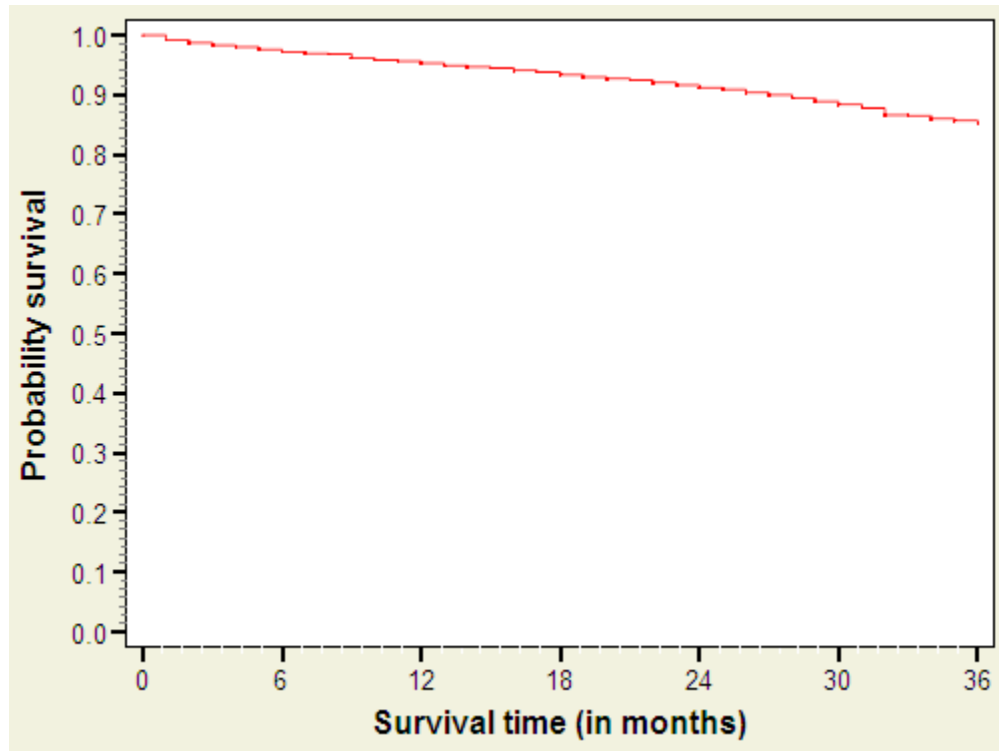
Observed survival after radical resection (all stages)



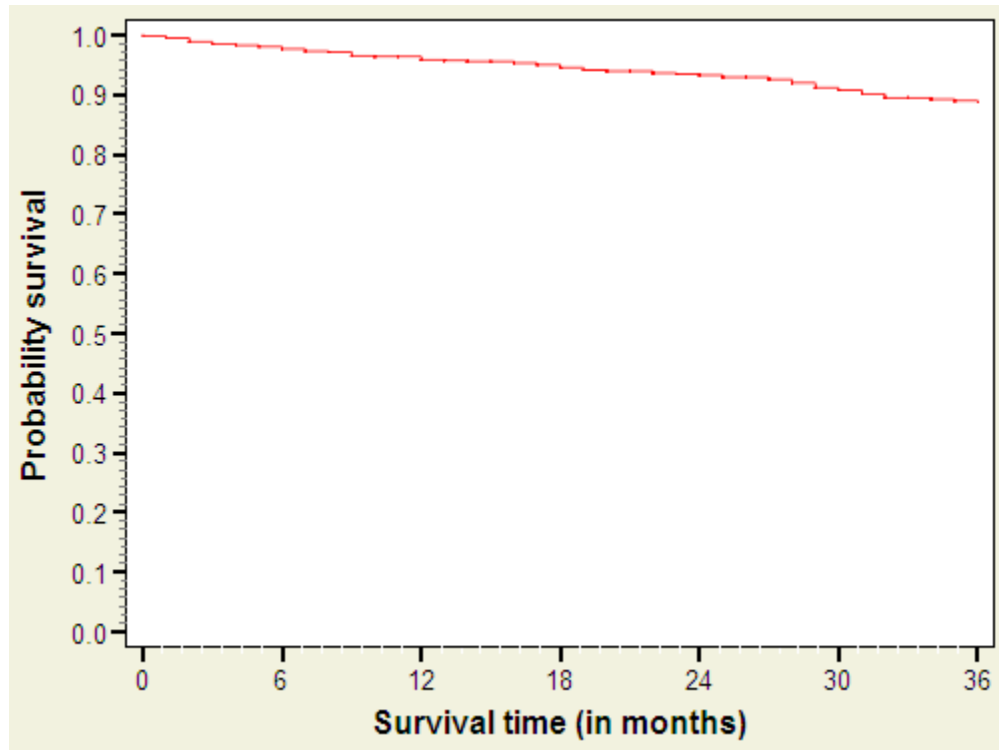
Observed survival after R0 radical per (y)pStage



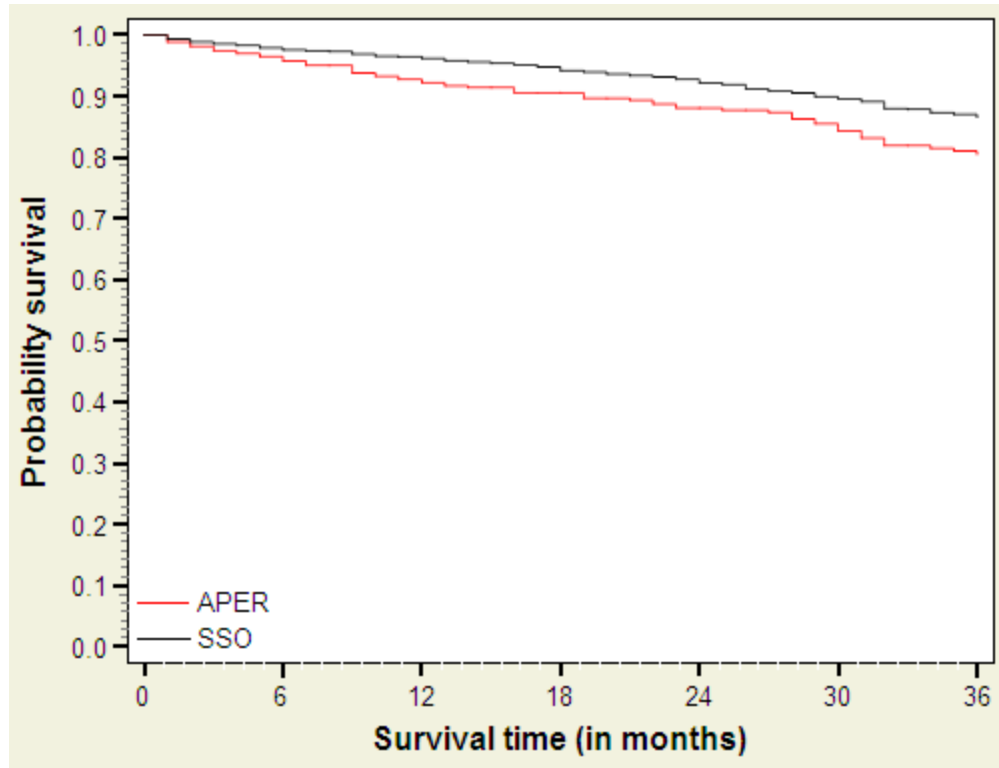
Observed survival after R0 radical resection for (y)pStage 0-III



Observed survival after R0 radical resection for (y)pStage 0-III in the lower third



Observed survival after R0 radical resection for (y)pStage 0-III in lower third

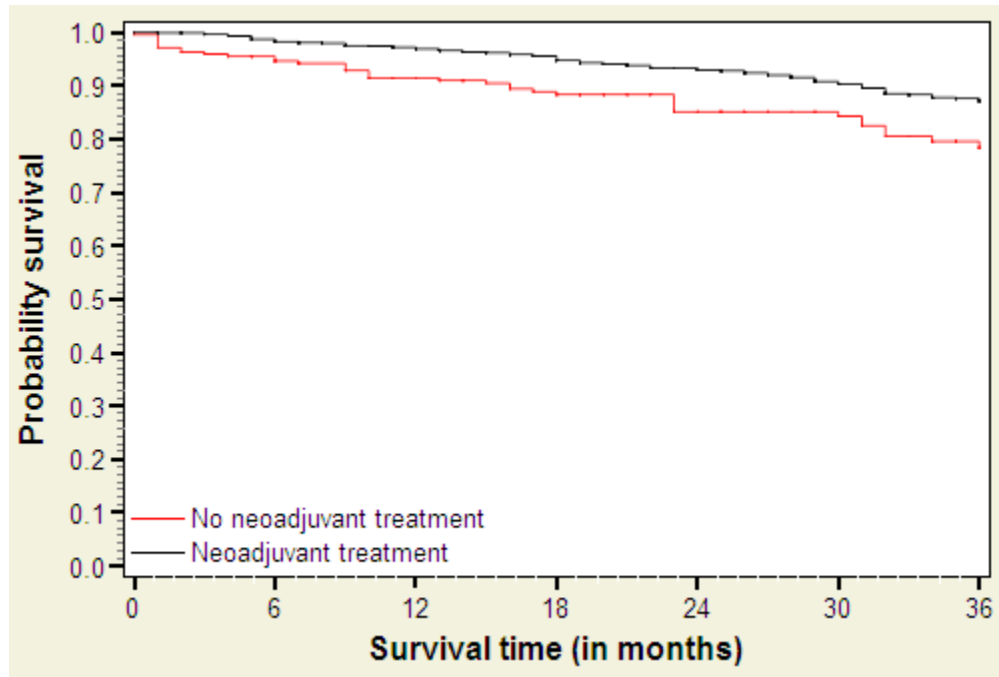


Statistics (APER vs SSO)

| Summary of the Number of Censored and Uncensored Values | | | | | |
|---|------|-------|--------|----------|------------------|
| Stratum | aper | Total | Failed | Censored | Percent Censored |
| 1 | 0 | 1570 | 186 | 1384 | 88.15 |
| 2 | 1 | 427 | 82 | 345 | 80.80 |
| Total | | 1997 | 268 | 1729 | 86.58 |

| Test of Equality over Strata | | | |
|------------------------------|------------|----|-----------------|
| Test | Chi-Square | DF | Pr > Chi-Square |
| Log-Rank | 13.4609 | 1 | 0.0002 |
| Wilcoxon | 11.9207 | 1 | 0.0006 |
| -2Log(LR) | 12.6601 | 1 | 0.0004 |

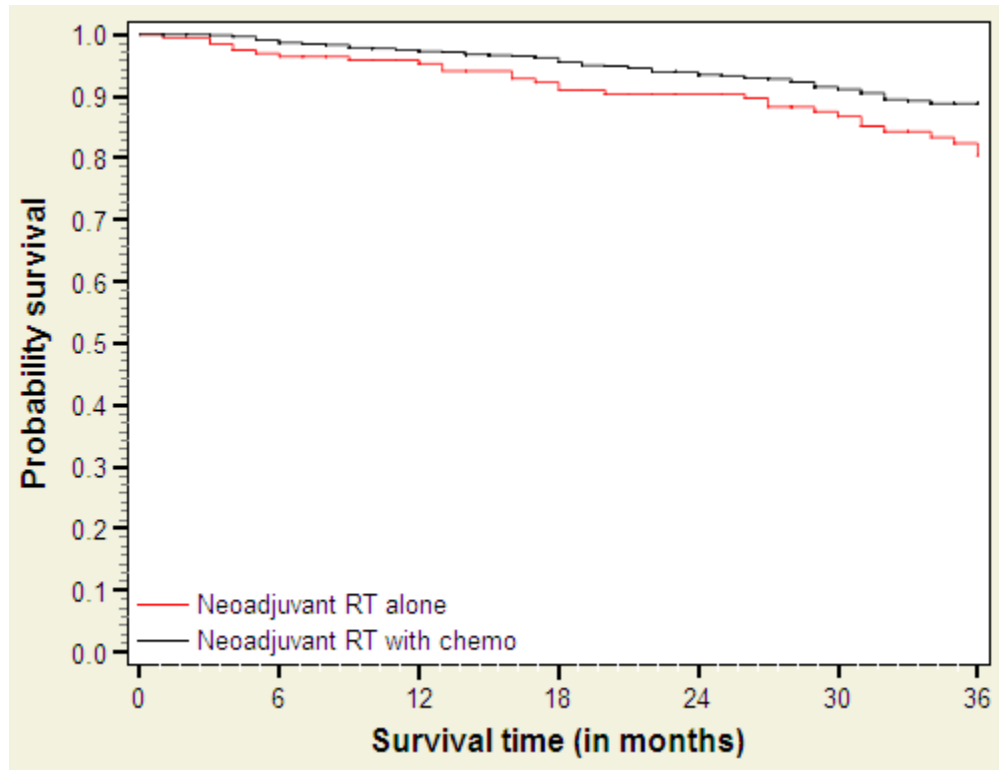
Observed survival for cStage II-III in mid and lower third



| Summary of the Number of Censored and Uncensored Values | | | | | |
|---|--------|-------|--------|----------|------------------|
| Stratum | neoadj | Total | Failed | Censored | Percent Censored |
| 1 | NO | 245 | 44 | 201 | 82.04 |
| 2 | YES | 1126 | 132 | 994 | 88.28 |
| Total | | 1371 | 176 | 1195 | 87.16 |

| Test of Equality over Strata | | | |
|------------------------------|------------|----|-----------------|
| Test | Chi-Square | DF | Pr > Chi-Square |
| Log-Rank | 14.4096 | 1 | 0.0001 |
| Wilcoxon | 16.9446 | 1 | <.0001 |
| -2Log(LR) | 10.7894 | 1 | 0.0010 |

Observed survival for cStage II-III in mid and lower third



| Summary of the Number of Censored and Uncensored Values | | | | | |
|---|---------------|-------|--------|----------|------------------|
| Stratum | rtchem | Total | Failed | Censored | Percent Censored |
| 1 | RT alone | 198 | 35 | 163 | 82.32 |
| 2 | RT with chemo | 928 | 97 | 831 | 89.55 |
| Total | | 1126 | 132 | 994 | 88.28 |

| Test of Equality over Strata | | | |
|------------------------------|------------|----|-----------------|
| Test | Chi-Square | DF | Pr > Chi-Square |
| Log-Rank | 6.4706 | 1 | 0.0110 |
| Wilcoxon | 6.1367 | 1 | 0.0132 |
| -2Log(LR) | 6.0374 | 1 | 0.0140 |