



FEEDBACK 2014

Annex 3: Accuracy of cT and cN staging

Version 1.0
(21/01/2015)

Table of contents

POPULATION	3
OVERALL RESULT	3
Table 1: Accuracy of cT staging if no or short preoperative radiotherapy (n=1834)	3
Table 2: Accuracy of cN staging if no or short preoperative radiotherapy (n=1787)	3
Figure 1: Accuracy of cT and cN staging by registration year	4
CENTRE RESULT	4

POPULATION:

All patients with radical resection that received no or short preoperative radiotherapy (number of fractions ≤ 5) are included. cT is based on conclusion of cTNM (summary of different techniques).

Exclusion criteria:

- Patients with cT0, cTis, cTx, cNx, (y)pTx or (y)pNx were excluded from these analyses.
- Patients who had an interval of more than 10 days or missing between the start of radiotherapy and radical resection were excluded from these analyses.

OVERALL RESULT:

Table 1: Accuracy of cT staging if no or short preoperative radiotherapy (n=1834)

	PROCARE					
	ypTis	ypT0	(y)pT1	(y)pT2	(y)pT3	(y)pT4
cT1	2	3	71	32	19	2
cT2	1	3	102	272	215	12
cT3	0	7	37	164	678	93
cT4	0	2	0	8	43	68

Short preoperative radiotherapy is defined as number of fractions ≤ 5

	PROCARE			
	<(y)pT3	\geq (y)pT3	All	
<cT3	486	248	734	34% (248/734) of cT<cT3 was understaged
\geq cT3	218	882	1100	20% (218/1100) of cT \geq cT3 was overstaged
All	704	1130	1834	Accuracy = 75% (1368/1834)

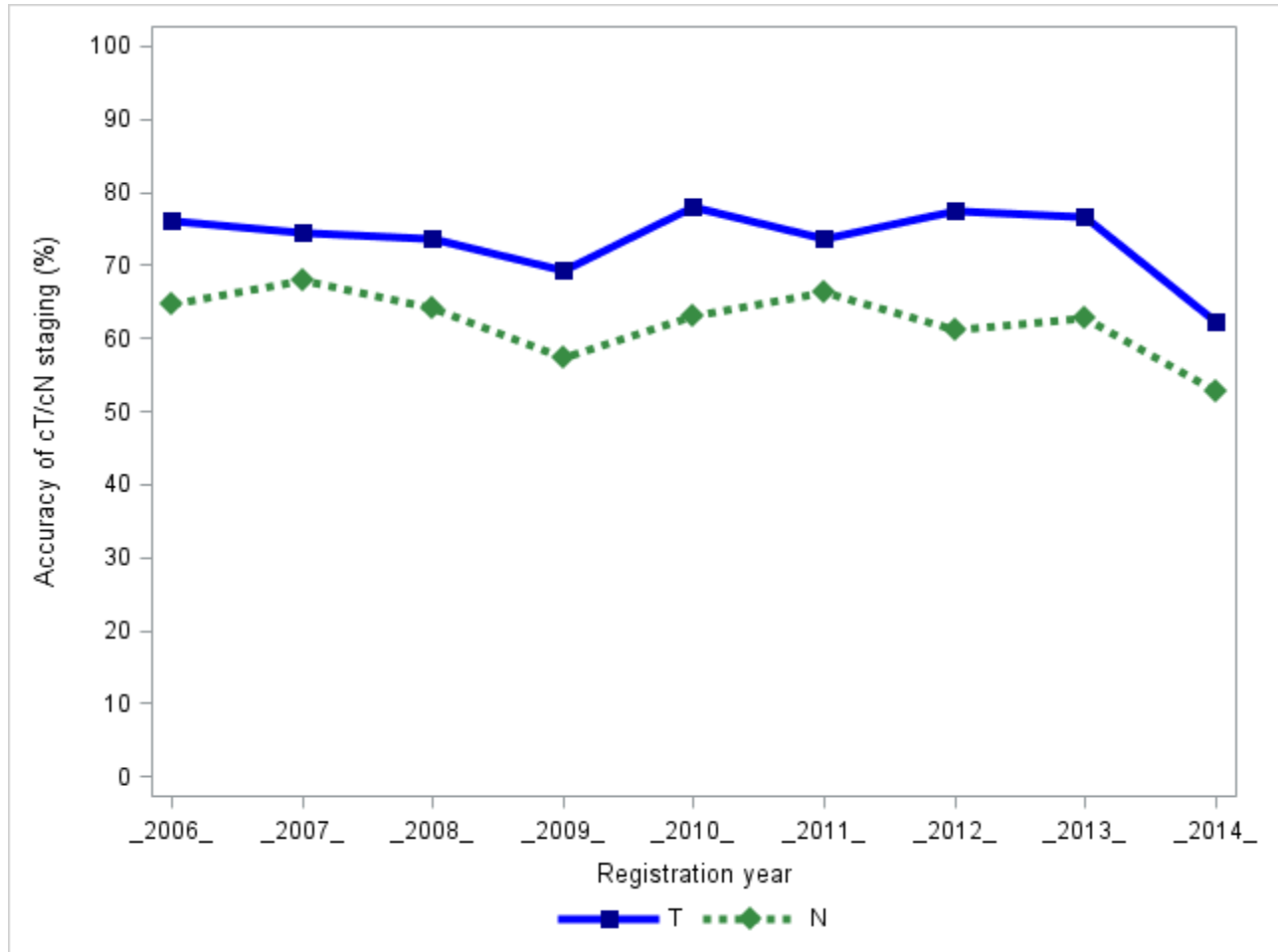
Table 2: Accuracy of cN staging if no or short preoperative radiotherapy (n=1787)

	PROCARE		
	pN0	pN1	pN2
cN0	681	229	66
cN1	279	170	141
cN2	83	49	89

Short preoperative radiotherapy is defined as number of fractions ≤ 5

	PROCARE			
	pN0	pN+	All	
cN0	681	295	976	30% (295/976) of cN0 was understaged
cN+	362	449	811	45% (362/811) of cN+ was overstaged
All	1043	744	1787	Accuracy = 63% (1130/1787)

Figure 1: Accuracy of cT and cN staging by registration year



CENTRE RESULT:

Centre evaluation is available for all centres with at least 50 patients in the PROCARE database.

To obtain your evaluation, you could contact the Belgian Cancer Registry via:
Kim Vande Loock <Kim.VandeLoock@kankerregister.org>