



## **FEEDBACK 2013**

### **Annex 4: Accuracy of cT and cN staging**

**Version 1.0**  
**(07/02/2014)**

## Table of contents

POPULATION .....	3
OVERALL RESULT .....	3
Table 1: Accuracy of cT staging if no or short preoperative radiotherapy (n=1735).....	3
Table 2: Accuracy of cN staging if no or short preoperative radiotherapy (n=1689) .....	3
Figure 1: Accuracy of cT and cN staging by registration year.....	3
CENTRE RESULT .....	4

## POPULATION:

All patients with radical resection that received no or short preoperative radiotherapy (number of fractions  $\leq 5$ ) are included. cT is based on conclusion of cTNM (summary of different techniques).

Exclusion criteria:

- Patients with cT0, cTis, cTx, cNx, (y)pTx or (y)pNx were excluded from these analyses.
- Patients who had an interval of more than 10 days or missing between the start of radiotherapy and radical resection were excluded from these analyses.

## OVERALL RESULT:

### Accuracy of cT staging if no or short preoperative radiotherapy (n=1735)

	PROCARE					
	ypTis	ypT0	(y)pT1	(y)pT2	(y)pT3	(y)pT4
cT1	1	2	64	29	17	2
cT2	1	3	87	258	199	10
cT3	0	13	37	157	649	83
cT4	0	3	0	7	43	70

Short preoperative radiotherapy is defined as number of fractions  $\leq 5$

	PROCARE			
	<(y)pT3	$\geq$ (y)pT3	All	
<cT3	445	228	673	34% (228/673) of cT<cT3 was understaged
$\geq$ cT3	217	845	1062	20% (217/1062) of cT $\geq$ cT3 was overstaged
All	662	1073	1735	Accuracy = 74% (1290/1735)

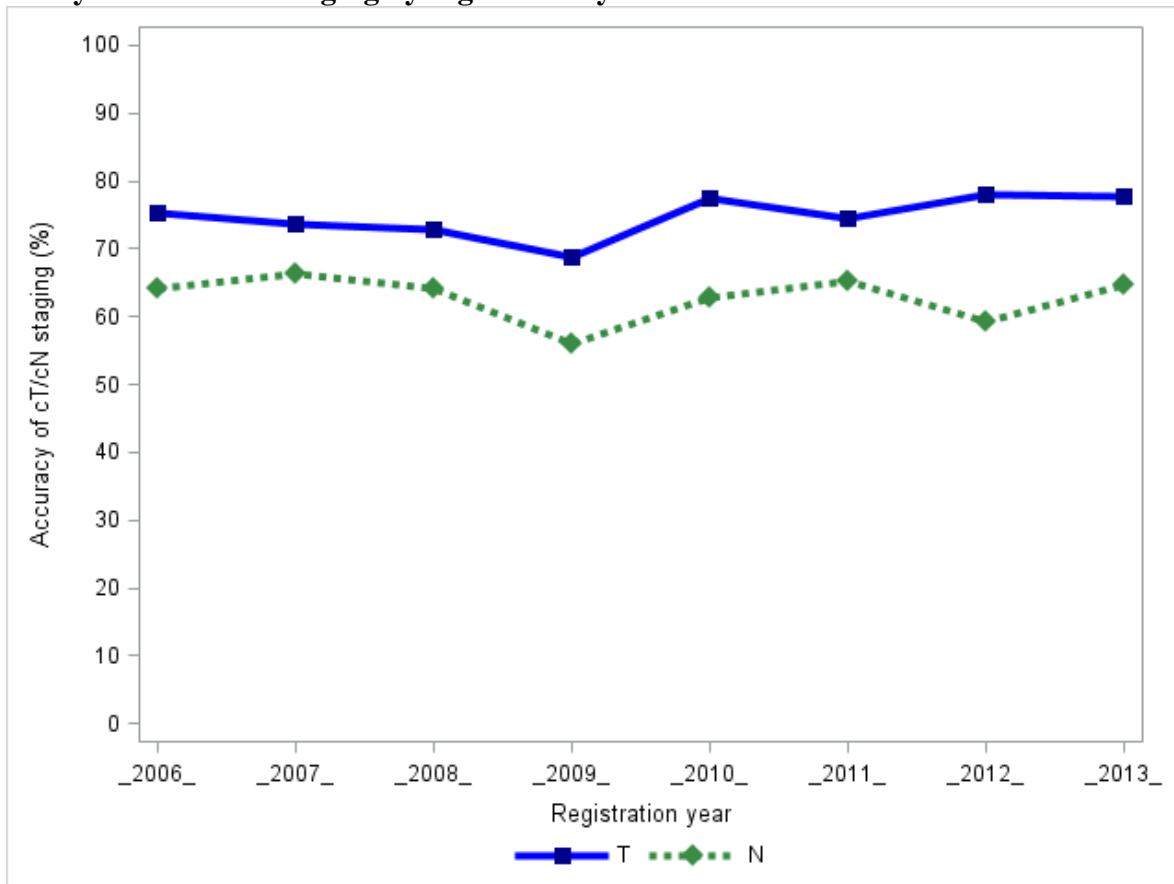
### Accuracy of cN staging if no or short preoperative radiotherapy (n=1689)

	PROCARE		
	pN0	pN1	pN2
cN0	626	210	66
cN1	281	164	133
cN2	76	51	82

Short preoperative radiotherapy is defined as number of fractions  $\leq 5$

	PROCARE			
	pN0	pN+	All	
cN0	626	276	902	31% (276/902) of cN0 was understaged
cN+	357	430	787	45% (357/787) of cN+ was overstaged
All	983	706	1689	Accuracy = 63% (1056/1689)

**Figure 1: Accuracy of cT and cN staging by registration year**



## **CENTRE RESULT:**

Centre evaluation is available for all centres with at least 50 patients in the PROCARE database.

To obtain your evaluation, you could contact the Belgian Cancer Registry via:

Kim Vande Look <[Kim.VandeLoock@kankerregister.org](mailto:Kim.VandeLoock@kankerregister.org)>