



## **FEEDBACK 2011**

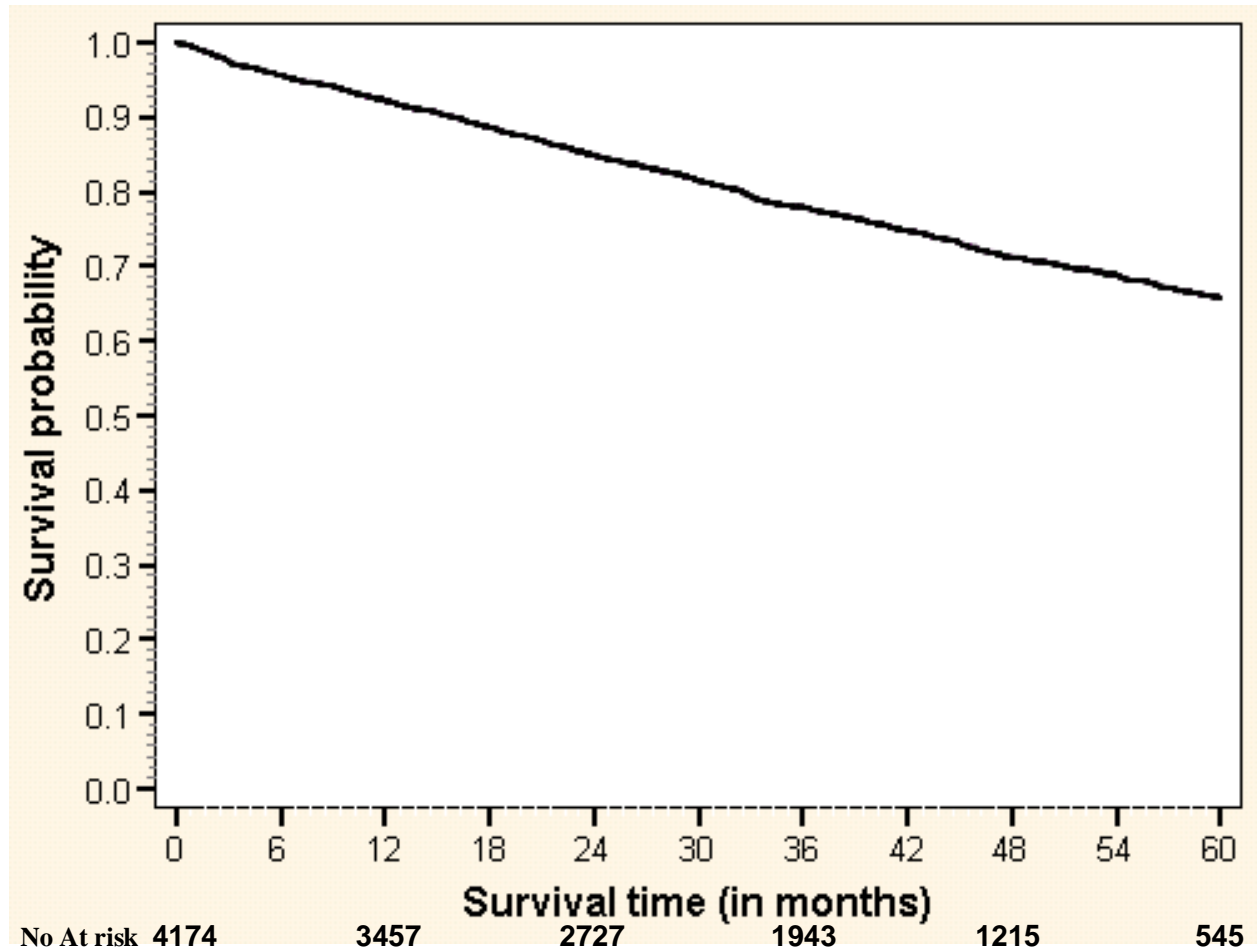
### **Annex 2 : Observed Survival analysis**

**Version 1.0**  
**(21/02/2012)**

## TABLE OF CONTENTS

Observed survival (all patients, all treatments) .....	3
Observed survival after R0 radical per (y)pstage .....	4
Observed survival after R0 radical resection for ypStage 0-III by level of the tumor .....	5
Observed survival after R0 radical resection for (y)pStage 0-III in lower third by type of reconstruction .....	6
Observed survival for cStage II-III in mid and lower third by type of neoadjuvant treatment (No vs short or long) .....	7
Observed survival for cStage II-III in mid and lower third by neoadjuvant treatment With(out) chemotherapy .....	8
Observed survival by incidence date .....	9

## Observed survival (all patients, all treatments)



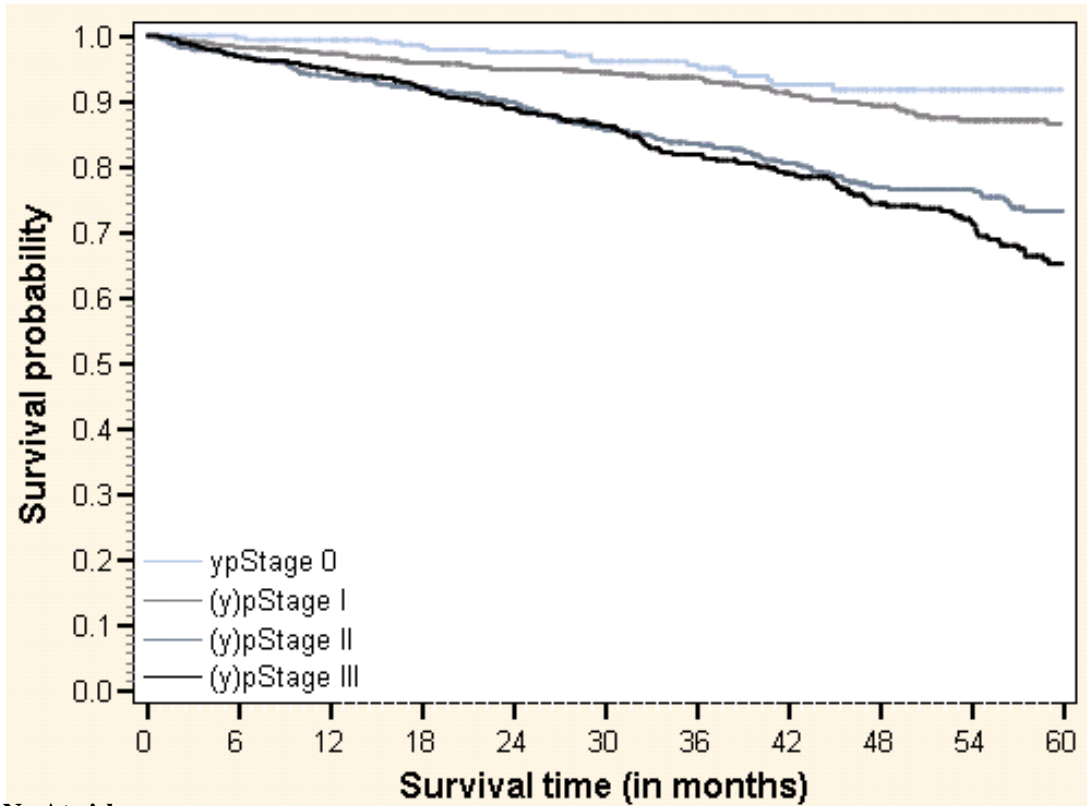
Summary of the Number of Censored and Uncensored Values			
Total	Failed	Censored	Percent Censored
4174	978	3196	76.57

*Total* is defined as the number of patients with available data for survival analysis.

*Failed* is defined as the number of patients that have an event (death) during the time that the patient was part of the study.

*Censored*: It is the number of censored observations. A censored observation is defined as an observation with incomplete information. It means that the patient did not have an event (death) during the time that the patient was part of the study.

## Observed survival after R0 radical per (y)pstage

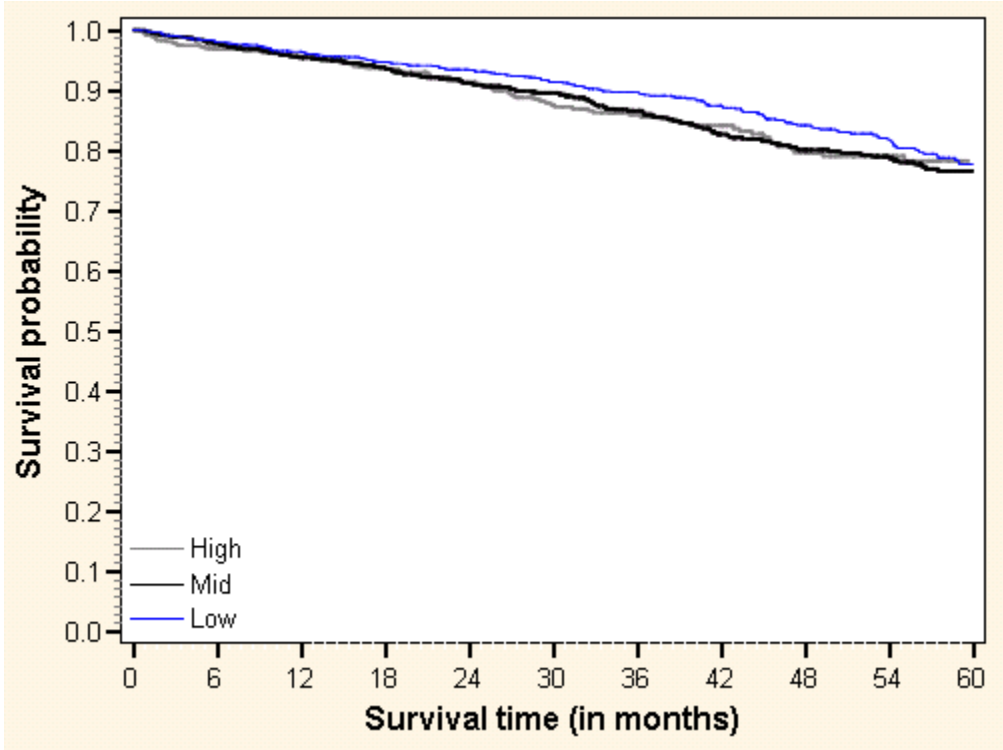


No At risk

ypStage 0	313	301	240	181	115	115
(y)pStage I	867	783	653	520	313	165
(y)pStage II	759	664	545	402	269	163
(y)pStage III	727	639	517	375	226	106

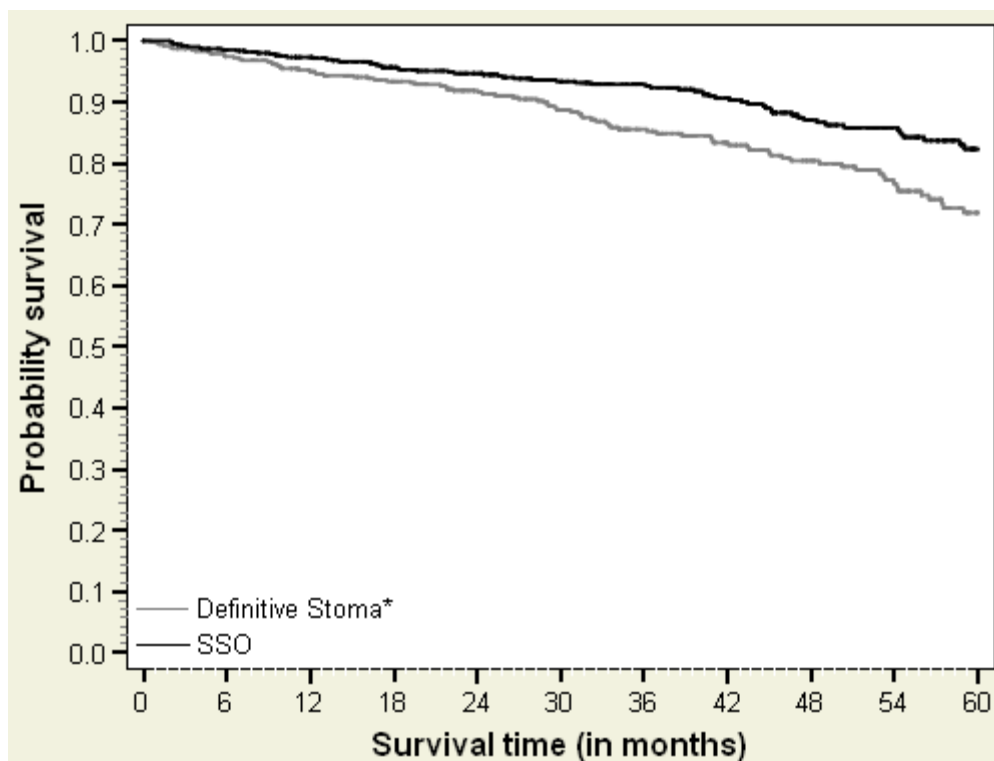
Summary of the Number of Censored and Uncensored Values					
Stratum	pypstage	Total	Failed	Censored	Percent Censored
1	ypStage 0	313	20	293	93.61
2	(y)pStage I	867	78	789	91.00
3	(y)pStage II	759	145	614	80.90
4	(y)pStage III	727	157	570	78.40
<b>Total</b>		2666	400	2266	85.00

**Observed survival after R0 radical resection for ypStage 0-III  
by level of the tumor**



Summary of the Number of Censored and Uncensored Values					
Stratum	level	Total	Failed	Censored	Percent Censored
1	high	470	73	397	84.47
2	low	1086	153	933	85.91
3	mid	1052	166	886	84.22
<b>Total</b>		2608	392	2216	84.97

## Observed survival after R0 radical resection for (y)pStage 0-III in lower third by type of reconstruction

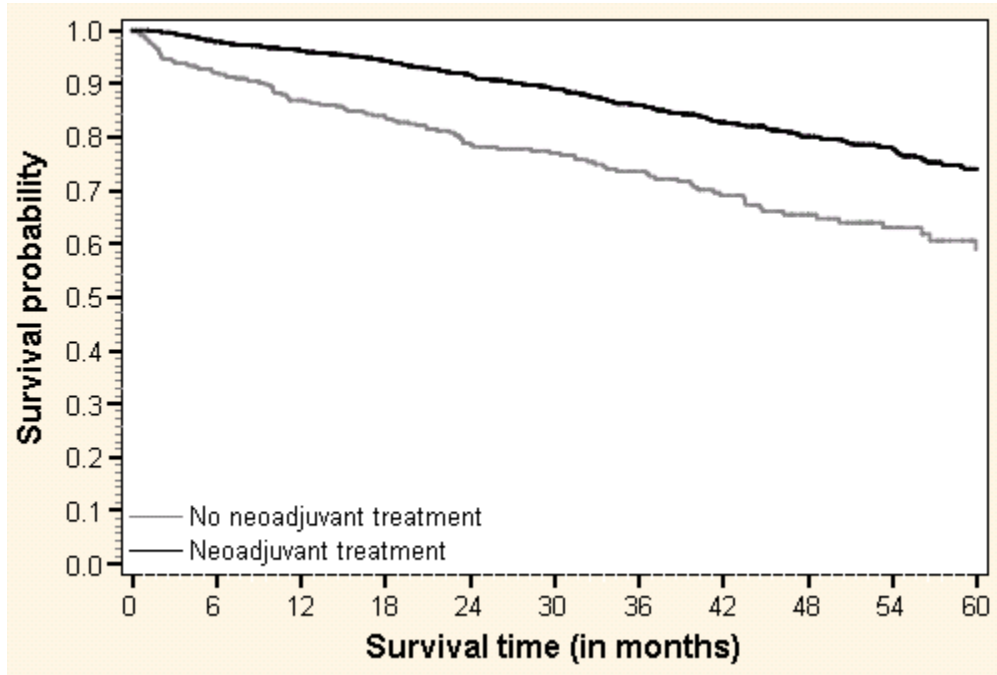


\*Definitive Stoma is define as APER, Hartmann or total excision of colon and rectum with definitive ileostomy

Summary of the Number of Censored and Uncensored Values					
Stratum	aper	Total	Failed	Censored	Percent Censored
1	Definitive Stoma	472	86	386	81.78
2	SSO	612	67	545	89.05
<b>Total</b>		1084	153	931	85.89

Test of Equality over Strata			
Test	Chi-Square	DF	Pr > Chi-Square
Log-Rank	10.8571	1	0.0010

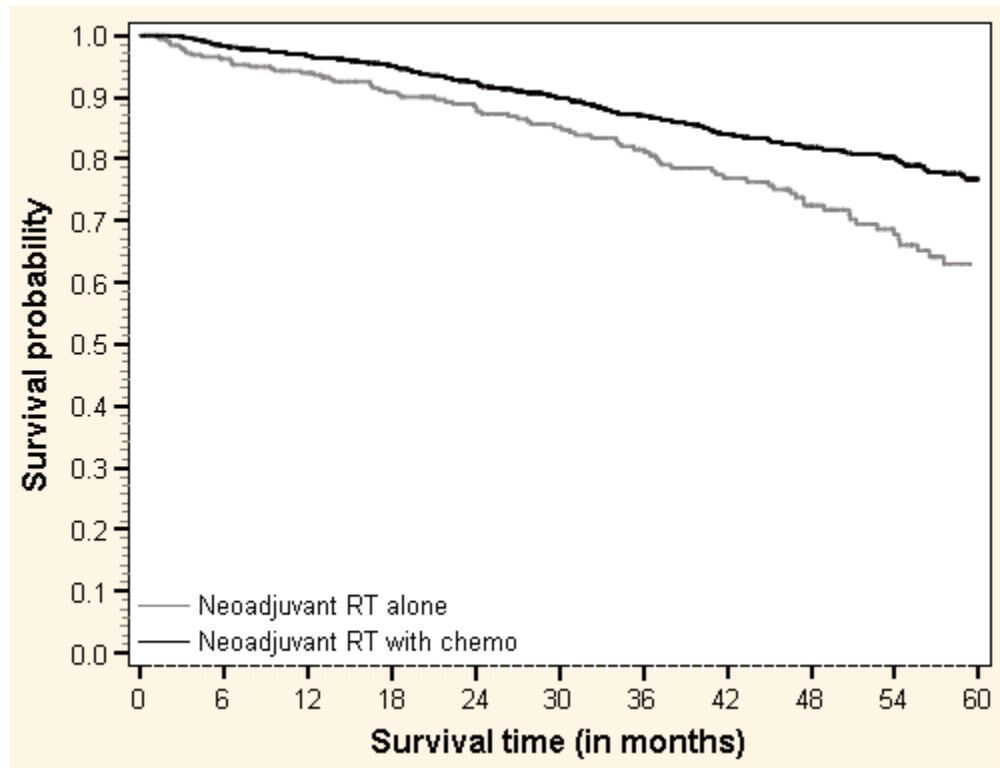
**Observed survival for cStage II-III in mid and lower third by type of neoadjuvant treatment (No vs short or long)**



Summary of the Number of Censored and Uncensored Values					
Stratum	neoadj	Total	Failed	Censored	Percent Censored
1	Neoadjuvant treatment	1828	299	1529	83.64
2	No Neoadjuvant treatment	409	112	297	72.62
<b>Total</b>		2237	411	1826	81.63

Test of Equality over Strata			
Test	Chi-Square	DF	Pr > Chi-Square
Log-Rank	44.4736	1	<.0001

## Observed survival for cStage II-III in mid and lower third by neoadjuvant treatment With(out) chemotherapy

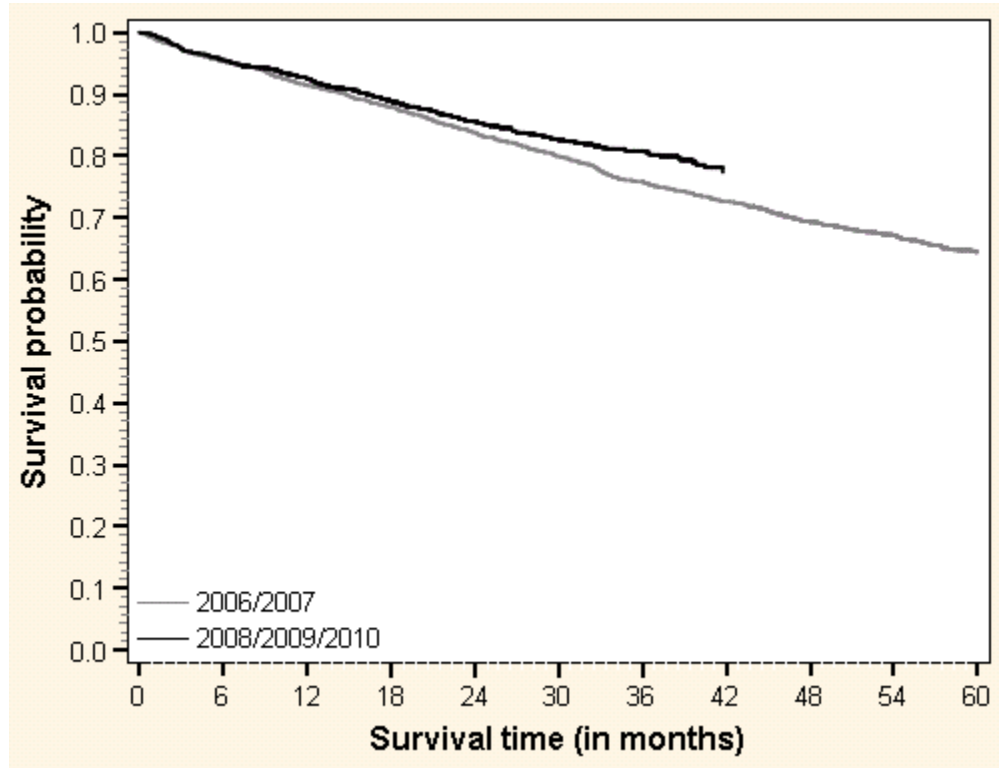


Summary of the Number of Censored and Uncensored Values					
Stratum	rtchem	Total	Failed	Censored	Percent Censored
1	Neoadjuvant RT alone	320	79	241	75.31
2	Neoadjuvant RT with chemo	1508	220	1288	85.41
<b>Total</b>		1828	299	1529	83.64

Test of Equality over Strata			
Test	Chi-Square	DF	Pr > Chi-Square
Log-Rank	15.3304	1	<.0001



## Observed survival by incidence date



### Summary of the Number of Censored and Uncensored Values

Stratum	yearincat	Total	Failed	Censored	Percent Censored
1	2006/2007	1706	576	1130	66.24
2	2008/2009/2010	2046	308	1738	84.95
<b>Total</b>		3752	884	2868	76.44

### Test of Equality over Strata

Test	Chi-Square	DF	Pr > Chi-Square
<b>Log-Rank</b>	6.8615	1	0.0088