

Belgian Cancer Registry



Cancer Fact Sheet **Stomach Cancer**

ICD10 : C16.1-16.9

Belgium 2021

1. Cancer Incidence

1.1. Number of new diagnoses and incidence rates

Table 1: Stomach Cancer: Average age at diagnosis, number of new cancer diagnoses (N), crude rate (CR), age-standardised incidence rates (ESR and WSR) and cumulative risk by sex and region, 2021

Males	Age (years)	N	CR	ESR	WSR	CRi
Belgium	70.3	509	9.0	6.1	4.1	0.43
Brussels-Capital Region	66.1	46	7.7	7.7	5.2	0.60
Flemish Region	71.3	312	9.5	5.9	3.9	0.39
Walloon Region	69.5	151	8.5	6.1	4.1	0.46

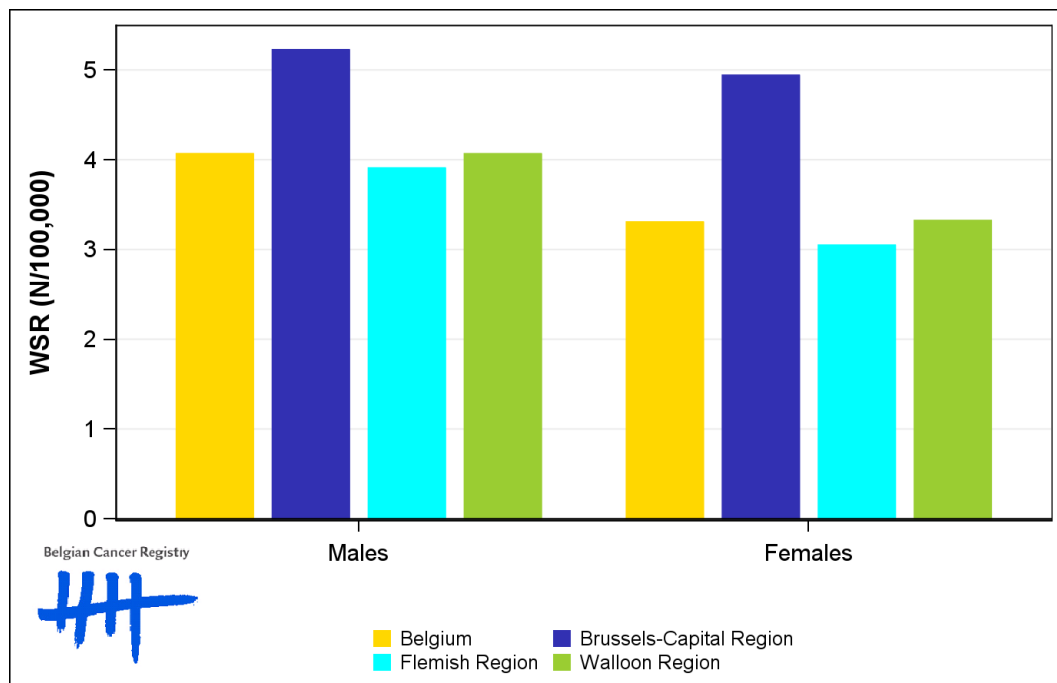
Females	Age (years)	N	CR	ESR	WSR	CRi
Belgium	68.7	425	7.3	4.7	3.3	0.38
Brussels-Capital Region	65.0	49	7.9	6.9	4.9	0.60
Flemish Region	70.0	244	7.3	4.4	3.0	0.35
Walloon Region	67.6	132	7.1	4.7	3.3	0.37

CR=Crude (all ages) Rate (N/100,000 person-years)
 ESR (1976)=Age-Standardised Rate, using the European Standard Population (N/100,000 person-years)
 WSR=Age-Standardised Rate, using the World Standard Population (N/100,000 person-years)
 CRi=Cumulative Risk for 0-74 years (%)

Belgian Cancer Registry



Figure 1: Stomach Cancer: Age-standardised incidence rates by sex and region, 2021



1.2. Age-specific incidence rates

Table 2: Stomach Cancer: Age-specific incidence rates, crude rate (CR) and age-standardised incidence rates (ESR and WSR) by sex, Belgium 2021

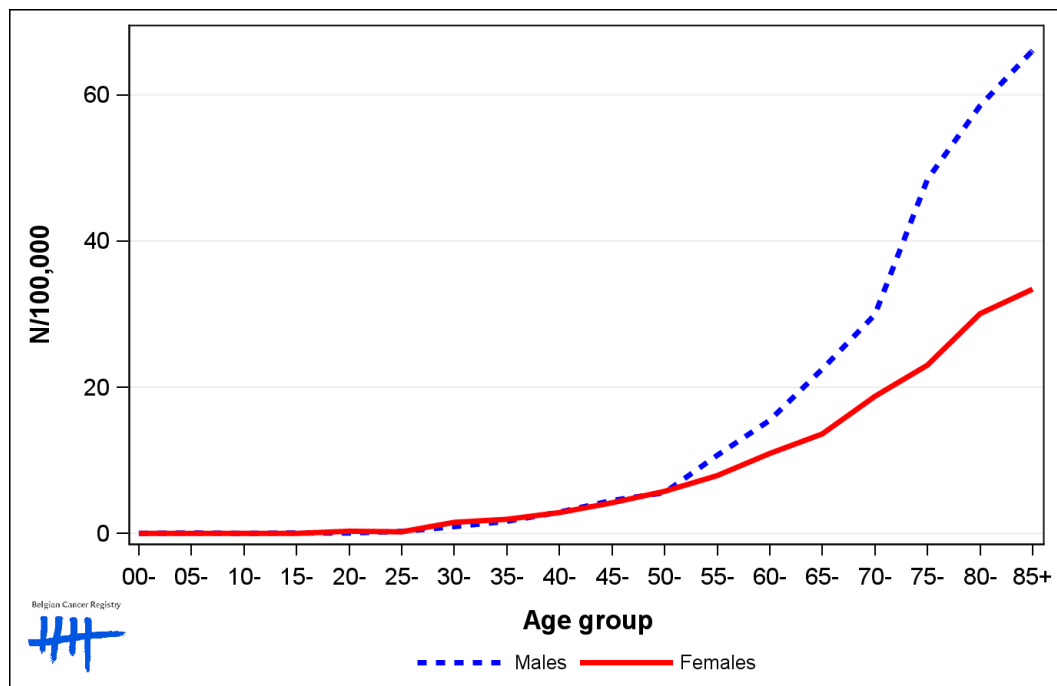
	00-	05-	10-	15-	20-	25-	30-	35-	40-	45-	50-	55-	60-	65-	70-	75-	80-	85+	CR	ESR	WSR
Males	0.0	0.3	0.0	0.0	0.0	0.3	1.1	1.3	2.4	5.0	4.5	11.9	14.6	19.3	24.9	48.8	63.5	52.1	9.0	6.1	4.1
Females	0.0	0.0	0.0	0.0	0.6	0.3	1.3	2.1	4.3	3.0	8.0	9.7	12.4	12.3	21.6	22.5	31.4	25.4	7.3	4.7	3.3

CR=Crude (all ages) Rate (N/100,000 person-years)

ESR (1976)=Age-Standardised Rate, using the European Standard Population (N/100,000 person-years)

WSR=Age-Standardised Rate, using the World Standard Population (N/100,000 person-years)

Figure 2: Stomach Cancer: Age-specific incidence rates by sex, 2017-2021



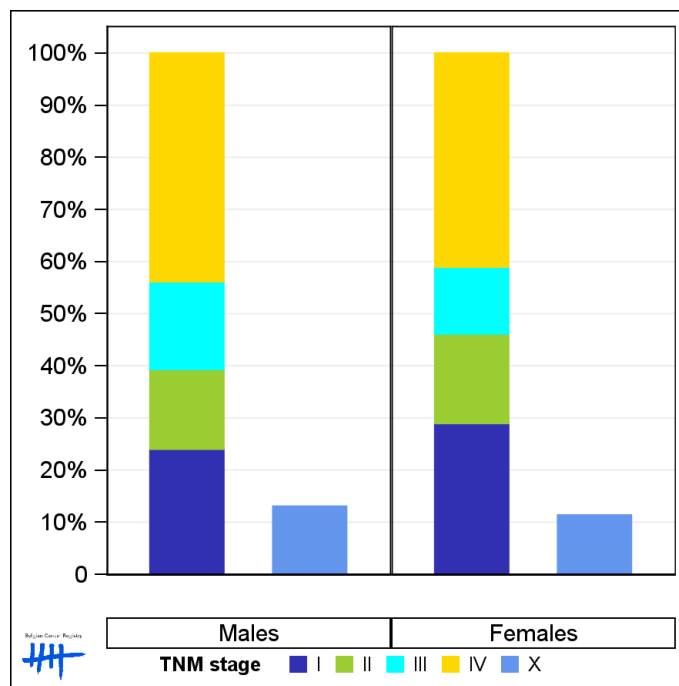
1.3. Combined stage

Table 3: Stomach Cancer: Distribution of combined stage by sex, Belgium 2021

	Stage I	Stage II	Stage III	Stage IV	Stage X	Stage NA	Total
Males							
N	80	51	56	146	50	126	509
%	15.7	10.0	11.0	28.7	9.8	24.8	100
Females							
N	79	47	35	112	35	117	425
%	18.6	11.1	8.2	26.4	8.2	27.5	100

Staging according to the TNM 8th edition (Ref: Brierley JD, Gospodarowicz MK, Wittekind Ch. TNM classification of malignant tumours, UICC 8th edition)
 Combined TNM stage : compilation of pathological (pTNM) and clinical (cTNM) stage. pTNM prevails over cTNM, except when cTNM stage is IV
 Stage X: diagnoses with an unknown stage
 Stage NA: diagnoses with a histological diagnosis where no stage can be evaluated (Not Applicable)

Figure 3: Stomach Cancer: Bar chart of known combined stage by sex, Belgium 2021



1.4. Trends in incidence

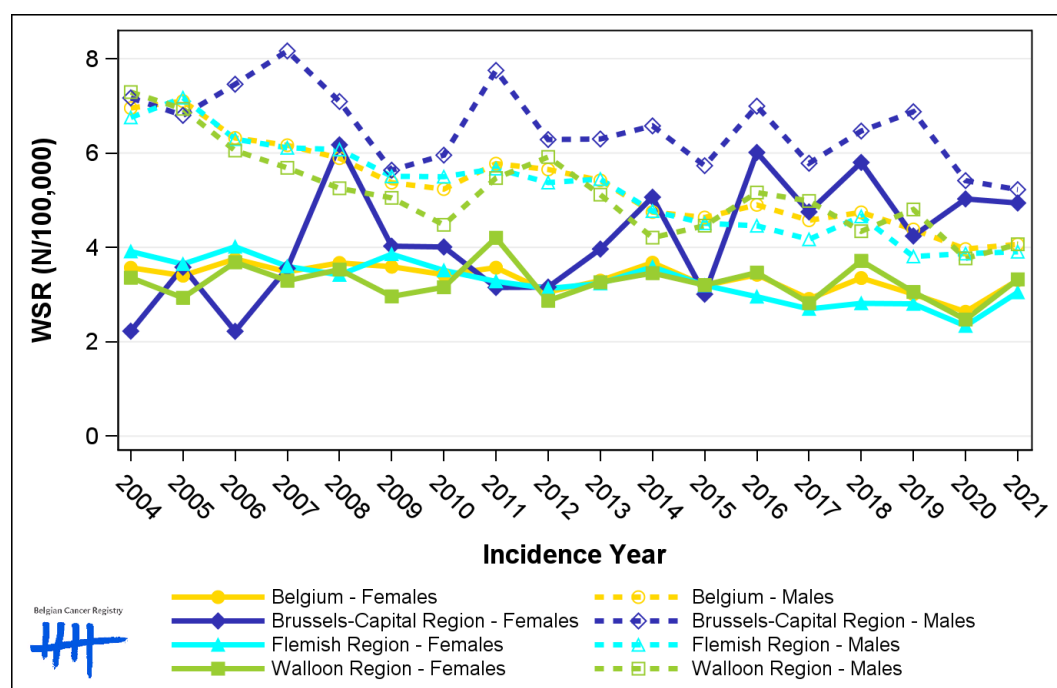
Table 4: Stomach Cancer: Age-standardised incidence rates (WSR) and average annual percentage change (AAPC) by incidence year, sex and region

Males	2007	2008	2009	2010	2011	2012	2013	2014	2015	2016	2017	2018	2019	2020	2021	AAPC	95% CI
Belgium	6.2	5.9	5.4	5.2	5.8	5.7	5.4	4.7	4.6	4.9	4.6	4.7	4.4	4.0	4.1	-2.8	[-3.4; -2.1]
Brussels-Capital Region	8.2	7.1	5.6	6.0	7.8	6.3	6.3	6.6	5.7	7.0	5.8	6.5	6.9	5.4	5.2	-1.5	[-2.9; -0.0]
Flemish Region	6.1	6.1	5.5	5.5	5.7	5.4	5.4	4.8	4.5	4.5	4.2	4.7	3.8	3.9	3.9	-3.4	[-4.1; -2.8]
Walloon Region	5.7	5.3	5.0	4.5	5.5	5.9	5.1	4.2	4.5	5.2	5.0	4.3	4.8	3.8	4.1	-1.9	[-3.2; -0.6]

Females	2007	2008	2009	2010	2011	2012	2013	2014	2015	2016	2017	2018	2019	2020	2021	AAPC	95% CI
Belgium	3.5	3.7	3.6	3.4	3.6	3.1	3.3	3.7	3.2	3.4	2.9	3.4	3.0	2.6	3.3	-1.3	[-2.3; -0.4]
Brussels-Capital Region	3.6	6.2	4.0	4.0	3.2	3.2	4.0	5.1	3.0	6.0	4.8	5.8	4.2	5.0	4.9	1.8	[-1.1; 4.9]
Flemish Region	3.6	3.4	3.9	3.5	3.3	3.1	3.2	3.6	3.2	3.0	2.7	2.8	2.8	2.3	3.0	-2.3	[-3.3; -1.3]
Walloon Region	3.3	3.5	3.0	3.2	4.2	2.9	3.3	3.5	3.2	3.5	2.8	3.7	3.1	2.5	3.3	-0.8	[-2.3; 0.9]

WSR=Age-Standardised Rate, using the World Standard Population (N/100,000 person-years)
AAPC = Average Annual Percentage Change over the 2007-2021 period

Figure 4: Stomach Cancer: Age-standardised incidence rates (WSR) by incidence year, sex and region



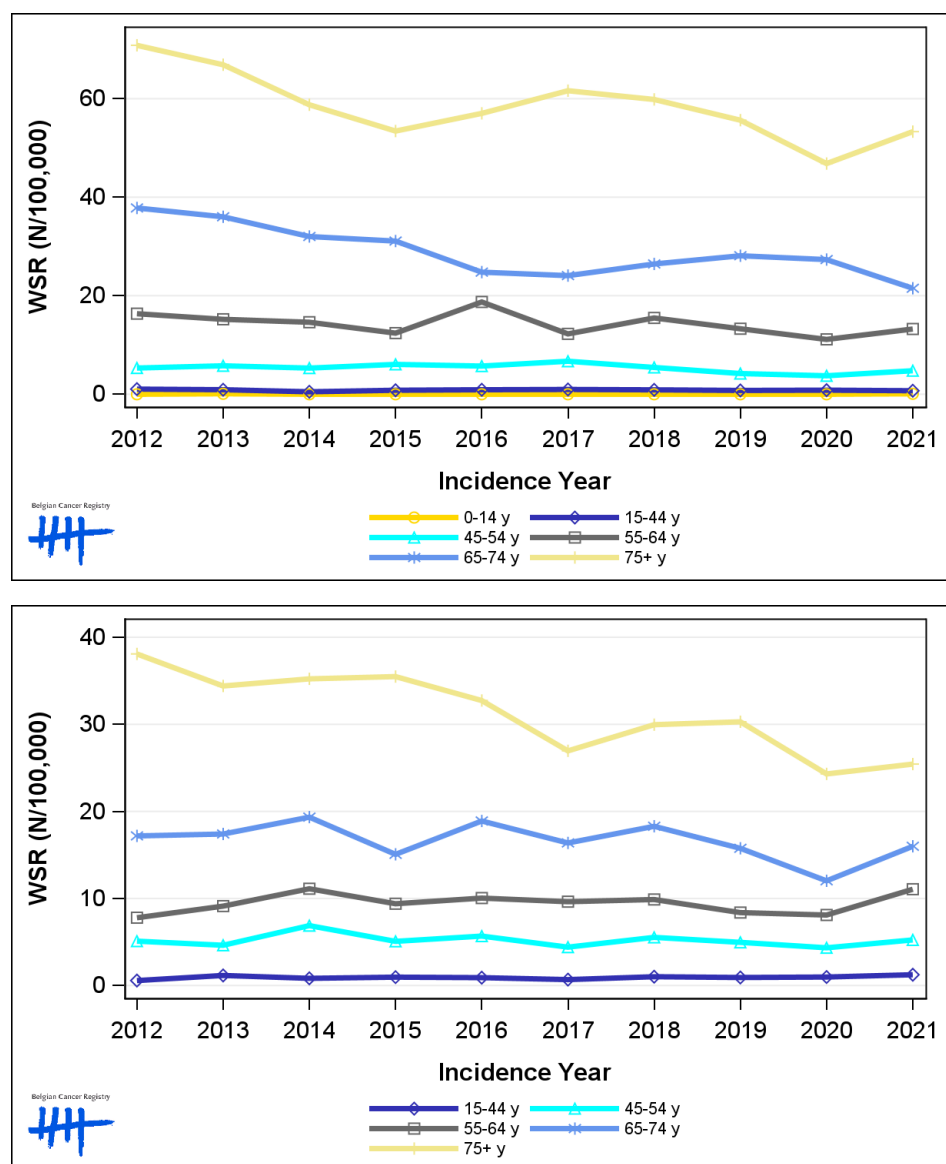
1.5. Incidence by broad age groups

Table 5: Stomach Cancer: Number of new diagnoses and age-standardised incidence rates (WSR) by broad age groups and incidence year by sex, Belgium

	N										WSR									
	2012	2013	2014	2015	2016	2017	2018	2019	2020	2021	2012	2013	2014	2015	2016	2017	2018	2019	2020	2021
Males																				
All ages	615	592	538	524	558	539	565	544	484	509	5.7	5.4	4.7	4.6	4.9	4.6	4.7	4.4	4.0	4.1
0-14 y	0	1	0	0	0	0	0	0	0	1	0.0	0.1	0.0	0.0	0.0	0.0	0.0	0.0	0.0	<0.1
15-44 y	27	23	13	21	23	26	23	20	21	19	1.0	0.9	0.5	0.8	0.9	1.0	0.9	0.8	0.8	0.7
45-54 y	44	48	45	51	47	55	45	34	30	37	5.3	5.8	5.3	6.1	5.7	6.7	5.4	4.2	3.8	4.8
55-64 y	109	103	99	86	132	88	113	97	83	101	16.4	15.2	14.6	12.4	18.7	12.3	15.5	13.3	11.1	13.2
65-74 y	174	168	152	152	125	127	144	156	155	125	37.8	36.0	32.0	31.1	24.8	24.1	26.5	28.1	27.3	21.5
75+ y	261	249	229	214	231	243	240	237	195	226	70.8	66.9	58.8	53.4	57.0	61.6	59.9	55.6	46.8	53.3
Females																				
All ages	442	444	475	433	457	393	446	422	352	425	3.1	3.3	3.7	3.2	3.4	2.9	3.4	3.0	2.6	3.3
0-14 y	0	0	0	0	0	0	0	0	0	0	0.0	0.0	0.0	0.0	0.0	0.0	0.0	0.0	0.0	0.0
15-44 y	15	30	21	25	23	18	26	24	25	32	0.6	1.2	0.8	1.0	0.9	0.7	1.0	0.9	1.0	1.2
45-54 y	42	38	55	40	44	35	44	39	34	42	5.1	4.6	6.9	5.1	5.7	4.4	5.5	5.0	4.3	5.2
55-64 y	53	63	77	66	72	71	74	62	61	85	7.8	9.1	11.1	9.4	10.0	9.6	9.9	8.4	8.1	11.1
65-74 y	87	92	103	81	105	95	108	97	74	104	17.2	17.4	19.3	15.1	18.9	16.4	18.3	15.8	12.0	16.0
75+ y	245	221	219	221	213	174	194	200	158	162	38.1	34.4	35.2	35.5	32.7	27.0	30.0	30.3	24.3	25.4

N=Number of invasive tumours
WSR=Age-Standardised Rate, using the World Standard Population (N/100,000 person-years)

Figure 5: Stomach Cancer: Age-standardised incidence rates (WSR) versus incidence year by broad age groups for males (top) and females (bottom), Belgium



2. Relative survival

Table 6: Stomach Cancer: 5-year relative survival proportion by sex, age group and region, Belgium 2017-2021

	5-year relative survival 2017-2021 (%)					
	Males			Females		
	N at risk	estimate	95% CI	N at risk	estimate	95% CI
Overall	2,616	44.5	[41.8, 47.2]	2,017	50.9	[47.9, 53.8]
Age group						
15-59 years	518	56.3	[51.2, 61.2]	469	63.9	[58.6, 68.7]
60-74 years	969	47.7	[43.5, 51.9]	670	58.8	[53.9, 63.5]
75+ years	1,130	35.6	[31.0, 40.3]	878	36.3	[31.5, 41.4]
Region						
Brussels-Capital Region	251	48.4	[40.0, 56.7]	248	52.9	[44.8, 60.6]
Flemish Region	1,592	41.4	[38.0, 44.7]	1,149	48.1	[44.1, 52.1]
Walloon Region	773	49.8	[44.7, 54.8]	620	55.2	[49.9, 60.3]

Figure 6: Stomach Cancer: relative survival proportion by sex, Belgium 2017-2021

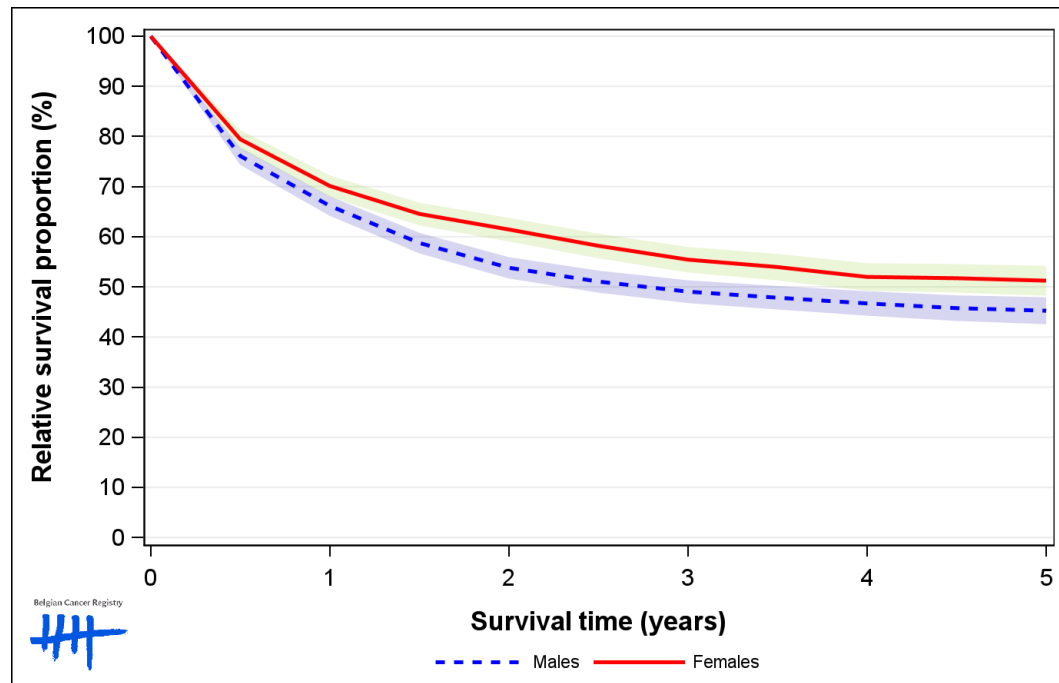


Figure 7: Stomach Cancer: relative survival proportion by age group in males, Belgium 2017-2021

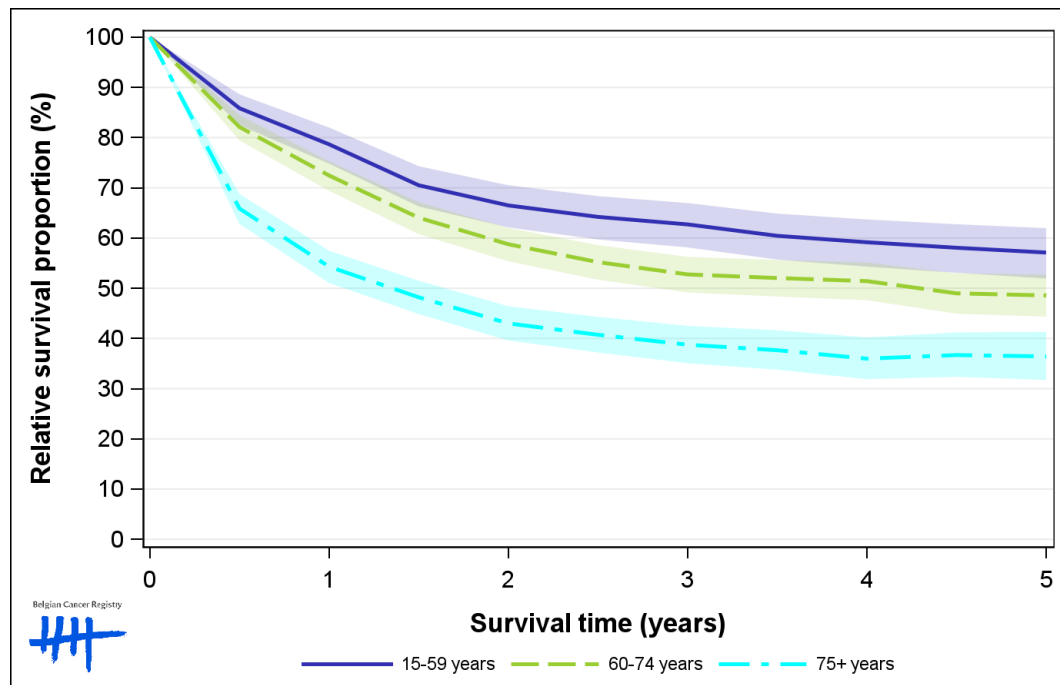


Figure 8: Stomach Cancer: relative survival proportion by age group in females, Belgium 2017-2021

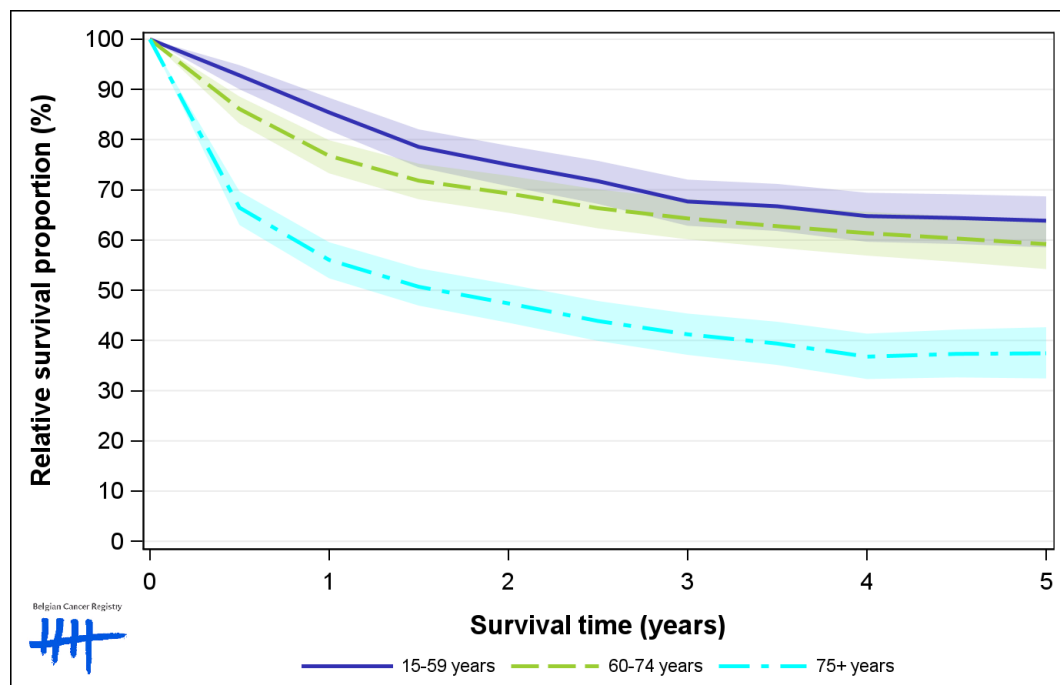


Figure 9: Stomach Cancer: relative survival proportion by region in males, Belgium 2017-2021

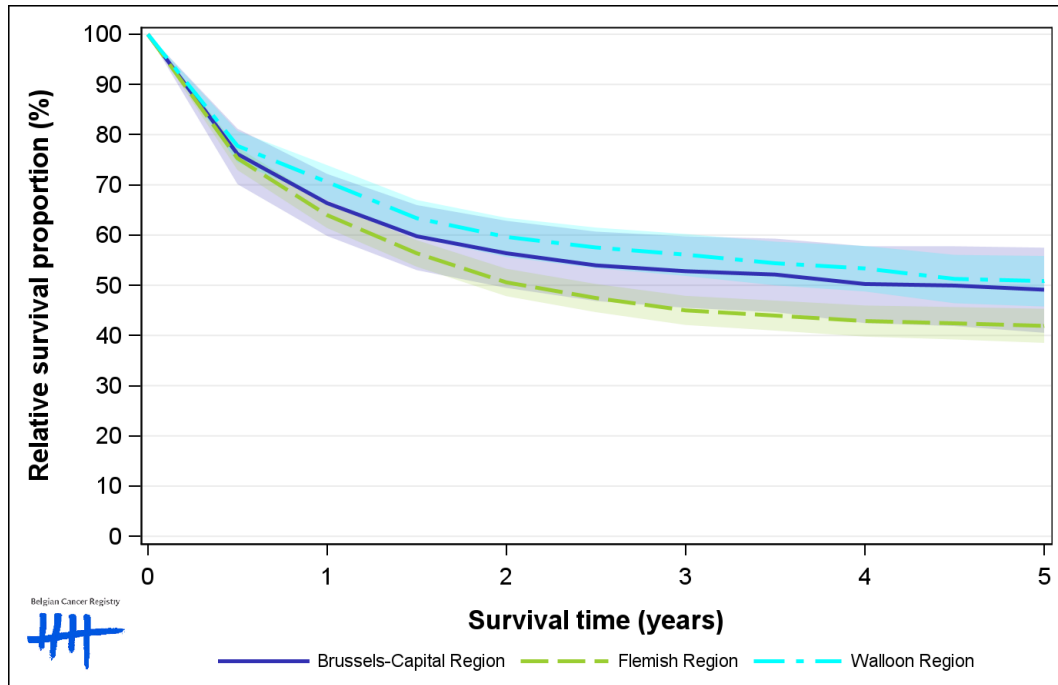


Figure 10: Stomach Cancer: relative survival proportion by region in females, Belgium 2017-2021

