

Belgian Cancer Registry



Cancer Fact Sheet **Corpus Uteri Cancer**

ICD10 : C54

Belgium 2020

1. Cancer Incidence

1.1. Number of new diagnoses and incidence rates

Table 1: Corpus Uteri Cancer: Average age at diagnosis, number of new cancer diagnoses (N), crude rate (CR), age-standardised incidence rates (ESR and WSR) and cumulative risk by region, 2020

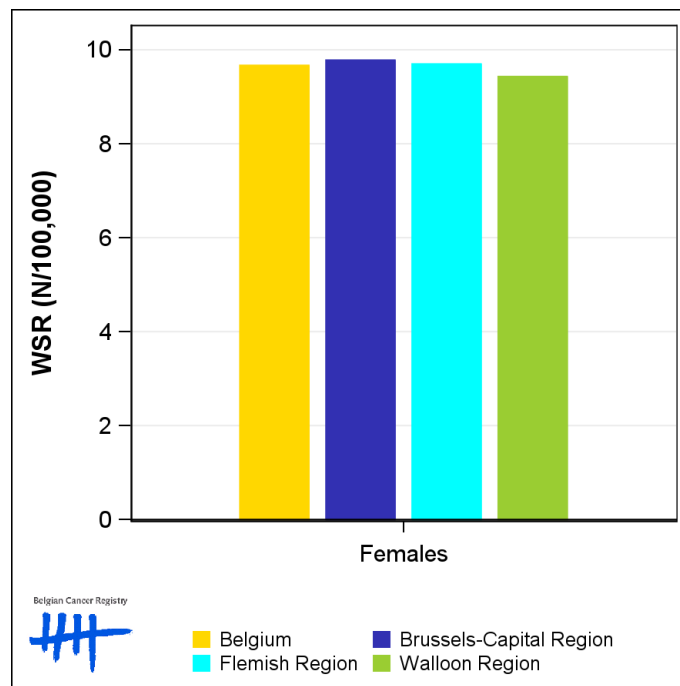
Females	Age (years)	N	CR	ESR	WSR	CRi
Belgium	70.1	1,300	22.3	14.1	9.7	1.21
Brussels-Capital Region	66.8	100	16.1	13.9	9.8	1.13
Flemish Region	70.5	792	23.7	14.2	9.7	1.21
Walloon Region	70.2	408	21.9	13.8	9.4	1.22

CR=Crude (all ages) Rate (N/100,000 person-years)
 ESR (1976)=Age-Standardised Rate, using the European Standard Population (N/100,000 person-years)
 WSR=Age-Standardised Rate, using the World Standard Population (N/100,000 person-years)
 CRi=Cumulative Risk for 0-74 years (%)

Belgian Cancer Registry



Figure 1: Corpus Uteri Cancer: Age-standardised incidence rates by region, 2020



1.2. Age-specific incidence rates

Table 2: Corpus Uteri Cancer: Age-specific incidence rates, crude rate (CR) and age-standardised incidence rates (ESR and WSR), Belgium 2020

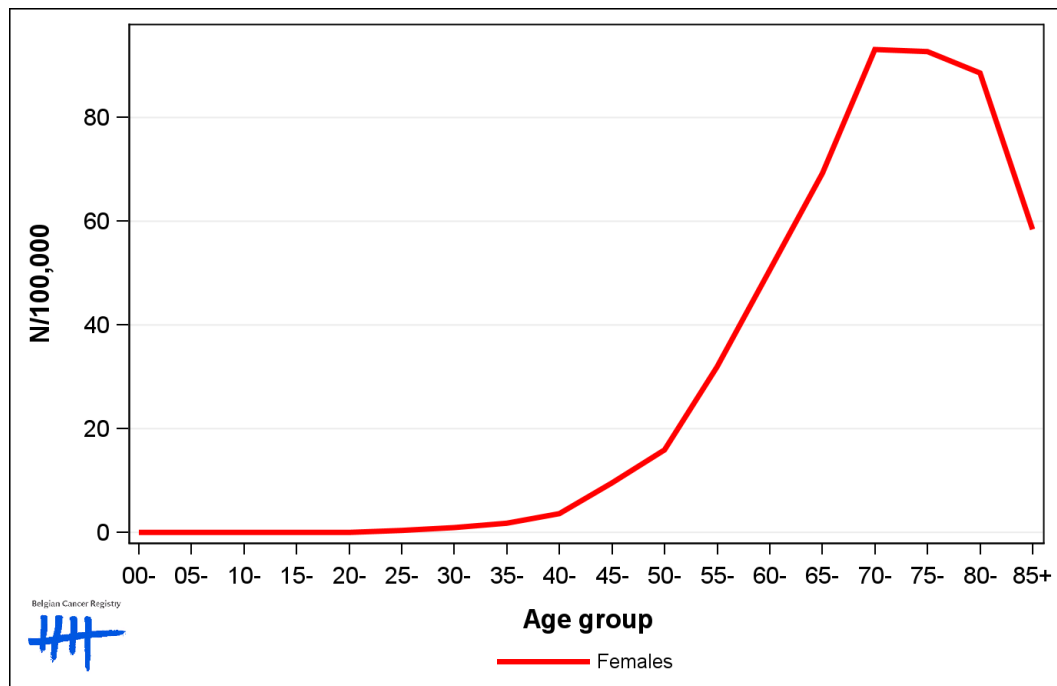
	00-	05-	10-	15-	20-	25-	30-	35-	40-	45-	50-	55-	60-	65-	70-	75-	80-	85+	CR	ESR	WSR
Females	0.0	0.0	0.0	0.0	0.5	1.3	2.1	1.9	9.8	12.3	27.8	49.3	59.8	79.2	92.3	91.0	51.9	22.3	14.1	9.7	

CR=Crude (all ages) Rate (N/100,000 person-years)

ESR (1976)=Age-Standardised Rate, using the European Standard Population (N/100,000 person-years)

WSR=Age-Standardised Rate, using the World Standard Population (N/100,000 person-years)

Figure 2: Corpus Uteri Cancer: Age-specific incidence rates, 2016-2020



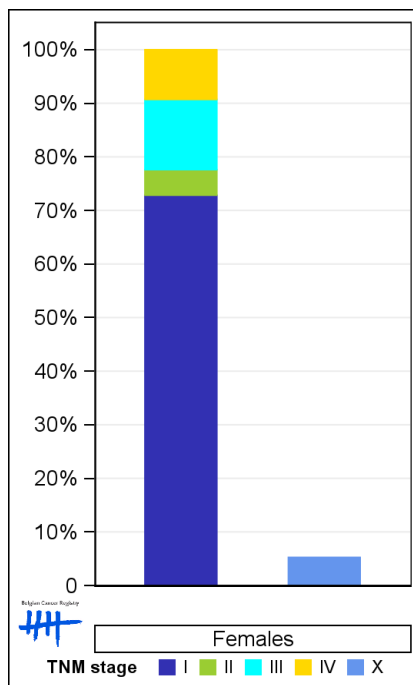
1.3. Combined stage

Table 3: Corpus Uteri Cancer: Distribution of combined stage, Belgium 2020

	Stage I	Stage II	Stage III	Stage IV	Stage X	Stage NA	Total
Females							
N	843	55	152	107	64	79	1,300
%	64.8	4.2	11.7	8.2	4.9	6.1	100

Staging according to the TNM 8th edition (Ref: Brierley JD, Gospodarowicz MK, Wittekind Ch. TNM classification of malignant tumours, UICC 8th edition)
 Combined TNM stage : compilation of pathological (pTNM) and clinical (cTNM) stage. pTNM prevails over cTNM, except when cTNM stage is IV
 Stage X: diagnoses with an unknown stage
 Stage NA: diagnoses with a histological diagnosis where no stage can be evaluated (Not Applicable)

Figure 3: Corpus Uteri Cancer: Bar chart of known combined stage, Belgium 2020



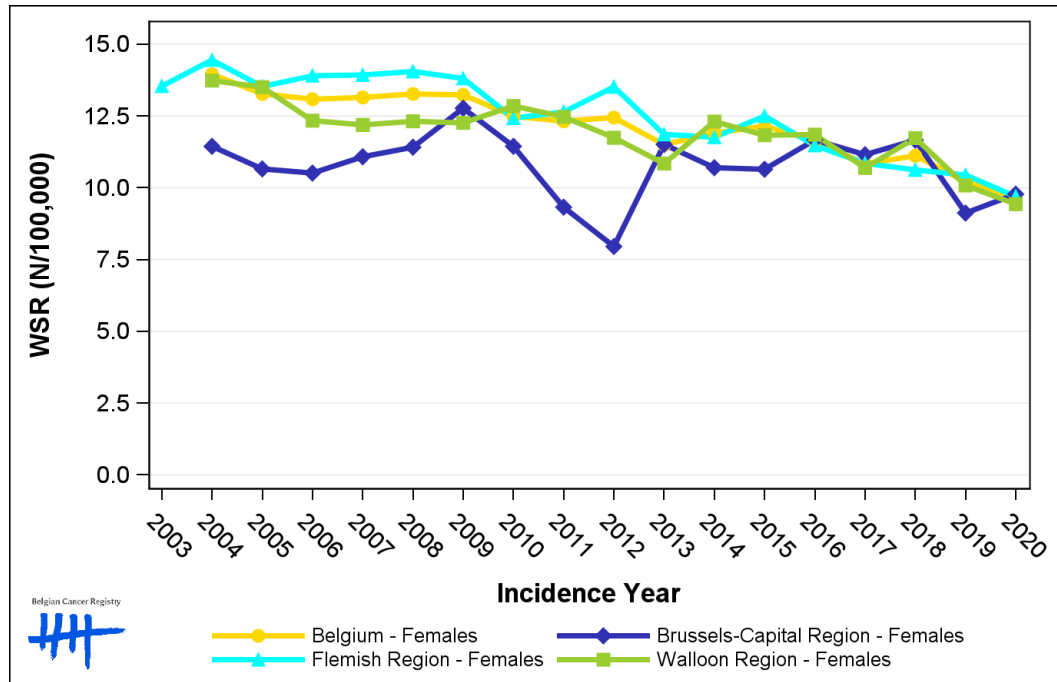
1.4. Trends in incidence

Table 4: Corpus Uteri Cancer: Age-standardised incidence rates (WSR) and average annual percentage change (AAPC) by incidence year and region

Females	2006	2007	2008	2009	2010	2011	2012	2013	2014	2015	2016	2017	2018	2019	2020	AAPC	95% CI
Belgium	13.1	13.1	13.3	13.2	12.5	12.3	12.4	11.5	11.9	12.1	11.6	10.8	11.1	10.2	9.7	-2.0	[-2.4; -1.6]
Brussels-Capital Region	10.5	11.1	11.4	12.8	11.4	9.3	8.0	11.5	10.7	10.6	11.7	11.2	11.7	9.1	9.8	-0.5	[-2.1; 1.0]
Flemish Region	13.9	13.9	14.1	13.8	12.4	12.6	13.5	11.9	11.8	12.5	11.5	10.9	10.6	10.4	9.7	-2.6	[-3.1; -2.1]
Walloon Region	12.3	12.2	12.3	12.3	12.8	12.5	11.7	10.8	12.3	11.8	11.9	10.7	11.7	10.1	9.4	-1.5	[-2.2; -0.7]

WSR=Age-Standardised Rate, using the World Standard Population (N/100,000 person-years)
 AAPC = Average Annual Percentage Change over the 2006-2020 period

Figure 4: Corpus Uteri Cancer: Age-standardised incidence rates (WSR) by incidence year and region



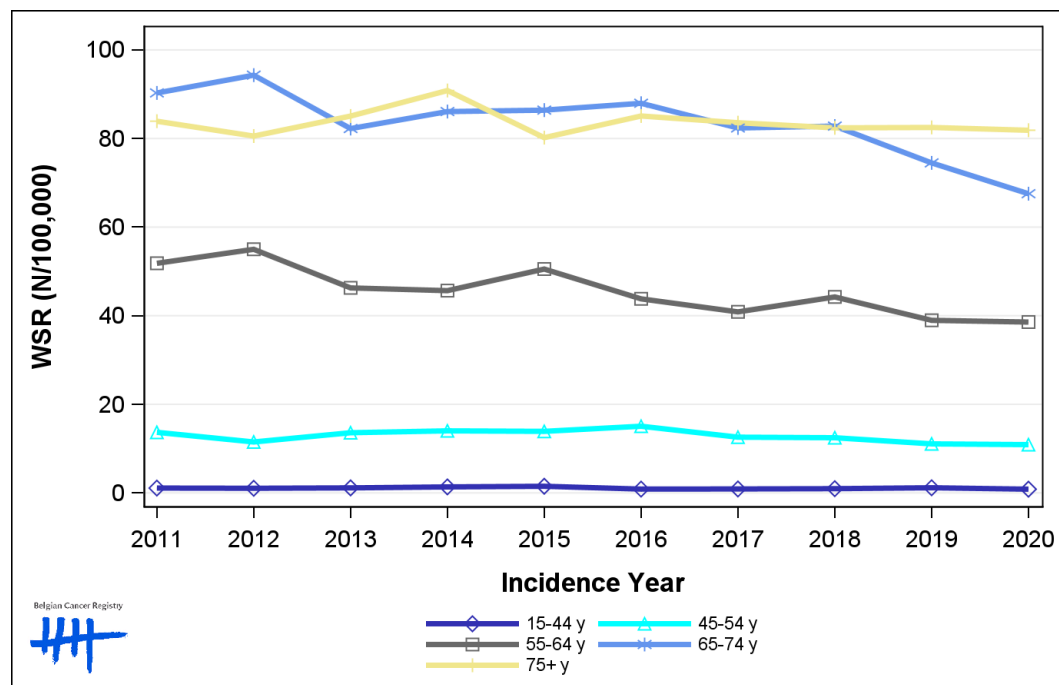
1.5. Incidence by broad age groups

Table 5: Corpus Uteri Cancer: Number of new diagnoses and age-standardised incidence rates (WSR) by broad age groups and incidence year, Belgium

	N										WSR									
	2011	2012	2013	2014	2015	2016	2017	2018	2019	2020	2011	2012	2013	2014	2015	2016	2017	2018	2019	2020
Females																				
All ages	1,430	1,450	1,391	1,464	1,459	1,443	1,398	1,437	1,346	1,300	12.3	12.4	11.5	11.9	12.1	11.6	10.8	11.1	10.2	9.7
0-14 y	0	0	0	0	0	0	0	0	0	0	0.0	0.0	0.0	0.0	0.0	0.0	0.0	0.0	0.0	0.0
15-44 y	28	27	28	35	40	23	23	25	30	22	1.1	1.1	1.1	1.4	1.5	0.9	0.9	1.0	1.2	0.9
45-54 y	112	95	113	117	116	123	105	100	89	85	13.7	11.5	13.6	14.0	13.9	15.1	12.6	12.5	11.1	10.9
55-64 y	352	376	318	316	357	313	298	326	292	292	51.8	55.0	46.3	45.7	50.5	43.8	40.9	44.2	39.0	38.6
65-74 y	454	479	426	455	465	488	476	496	454	421	90.3	94.3	82.3	86.1	86.4	88.0	82.4	82.8	74.5	67.5
75+ y	484	473	506	541	481	496	496	490	481	480	83.9	80.6	85.1	90.8	80.2	85.1	83.6	82.4	82.5	81.9

N=Number of invasive tumours
WSR=Age-Standardised Rate, using the World Standard Population (N/100,000 person-years)

Figure 5: Corpus Uteri Cancer: Age-standardised incidence rates (WSR) versus incidence year by broad age groups, Belgium



Belgian Cancer Registry

15-44 y 45-54 y
55-64 y 65-74 y
75+ y

2. Relative survival

Table 6: Corpus Uteri Cancer: 5-year relative survival proportion by age group and region, Belgium 2016-2020

	5-year relative survival 2016-2020 (%)		
	Females		
	N at risk	estimate	95% CI
Overall	6,881	80.7	[79.2, 82.3]
Age group			
15-54 years	617	89.1	[85.8, 91.7]
55-69 years	2,601	84.5	[82.5, 86.4]
70+ years	3,663	76.5	[73.8, 79.0]
Region			
Brussels-Capital Region	529	79.6	[74.0, 84.6]
Flemish Region	4,144	81.3	[79.3, 83.1]
Walloon Region	2,208	80.0	[77.0, 82.8]

Figure 6: Corpus Uteri Cancer: relative survival proportion, Belgium 2016-2020

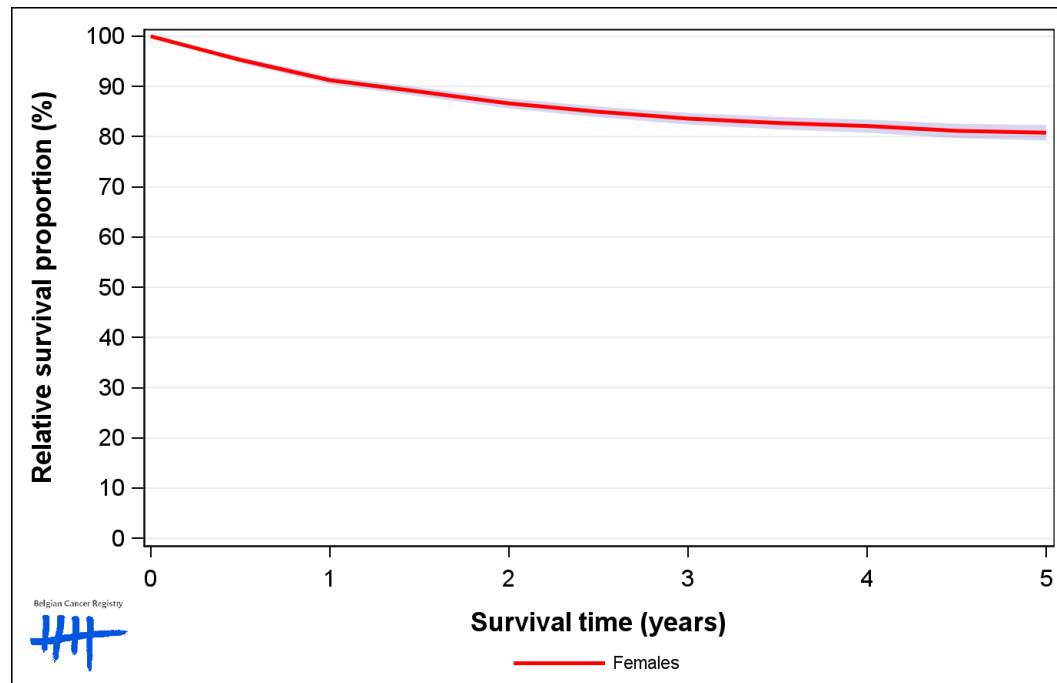


Figure 7: Corpus Uteri Cancer: relative survival proportion by age group, Belgium 2016-2020

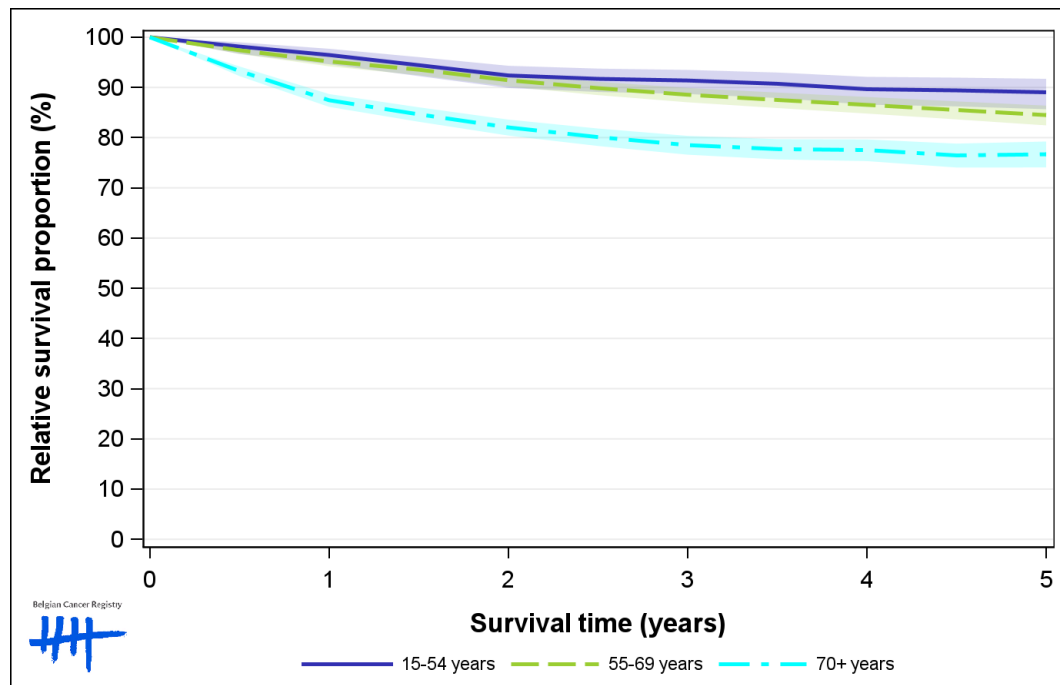


Figure 8: Corpus Uteri Cancer: relative survival proportion by region, Belgium 2016-2020

