

Belgian Cancer Registry



# Cancer Fact Sheet **Ovarian Cancer**

ICD10 : C56

**Belgium 2019**

# 1. Cancer Incidence

## 1.1. Number of new diagnoses and incidence rates

**Table 1:** Ovarian Cancer: Average age at diagnosis, number of new cancer diagnoses (N), crude rate (CR), age-standardised incidence rates (ESR and WSR) and cumulative risk by region, 2019

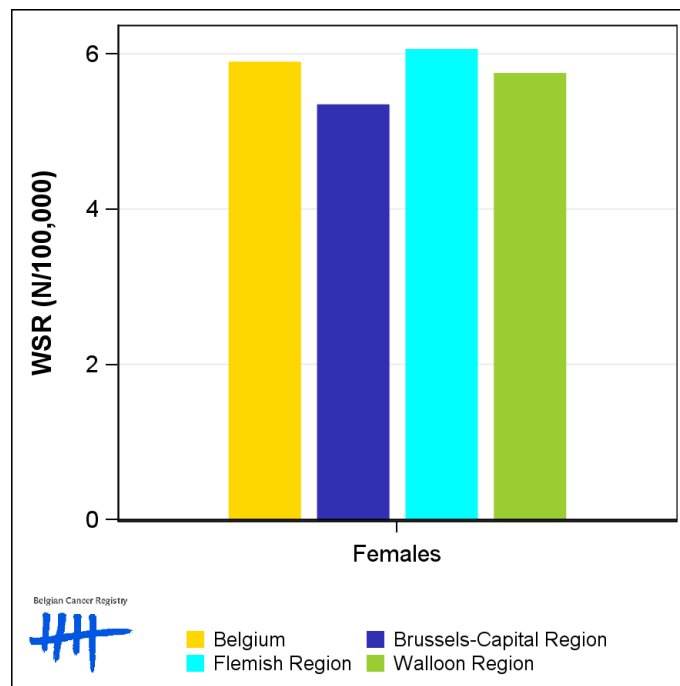
Females	Age (years)	N	CR	ESR	WSR	CRi
<b>Belgium</b>	<b>67.0</b>	<b>697</b>	<b>12.0</b>	<b>8.2</b>	<b>5.9</b>	<b>0.69</b>
Brussels-Capital Region	65.9	54	8.8	7.6	5.3	0.65
Flemish Region	67.7	433	13.0	8.5	6.1	0.71
Walloon Region	65.9	210	11.3	7.9	5.7	0.66

CR=Crude (all ages) Rate (N/100,000 person-years)  
 ESR (1976)=Age-Standardised Rate, using the European Standard Population (N/100,000 person-years)  
 WSR=Age-Standardised Rate, using the World Standard Population (N/100,000 person-years)  
 CRi=Cumulative Risk for 0-74 years (%)

Belgian Cancer Registry



**Figure 1:** Ovarian Cancer: Age-standardised incidence rates by region, 2019



## 1.2. Age-specific incidence rates

**Table 2:** Ovarian Cancer: Age-specific incidence rates, crude rate (CR) and age-standardised incidence rates (ESR and WSR), Belgium 2019

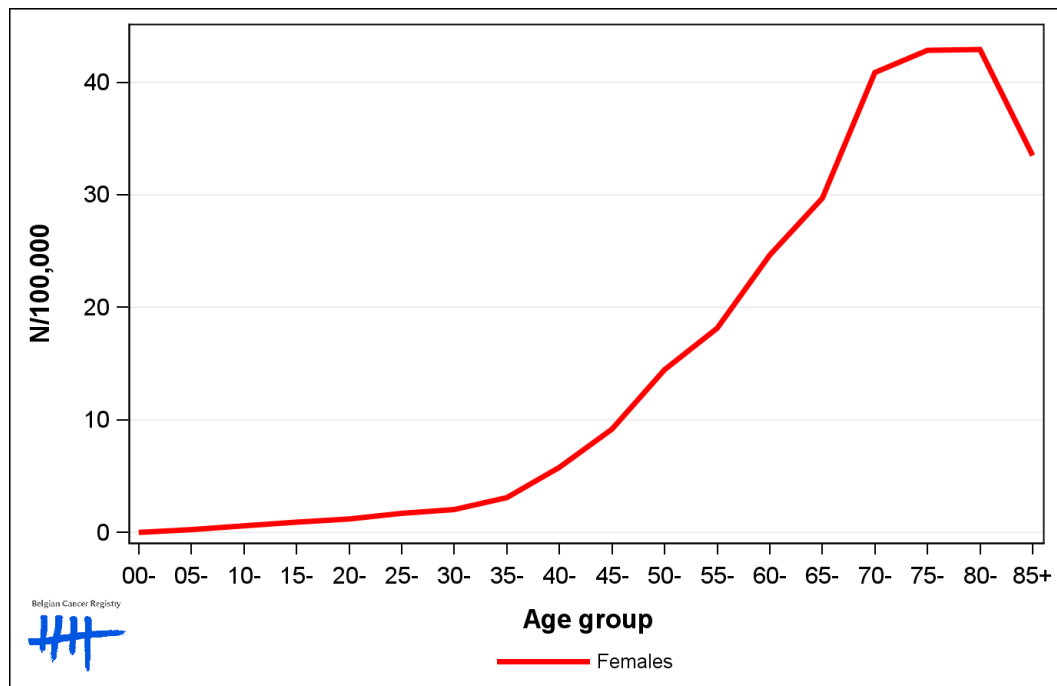
	00-	05-	10-	15-	20-	25-	30-	35-	40-	45-	50-	55-	60-	65-	70-	75-	80-	85+	CR	ESR	WSR
Females	0.0	0.0	0.9	1.0	1.5	0.8	2.2	1.6	5.2	7.3	15.9	18.0	18.6	26.2	38.4	34.9	45.7	32.7	12.0	8.2	5.9

CR=Crude (all ages) Rate (N/100,000 person-years)

ESR (1976)=Age-Standardised Rate, using the European Standard Population (N/100,000 person-years)

WSR=Age-Standardised Rate, using the World Standard Population (N/100,000 person-years)

**Figure 2:** Ovarian Cancer: Age-specific incidence rates, 2015-2019



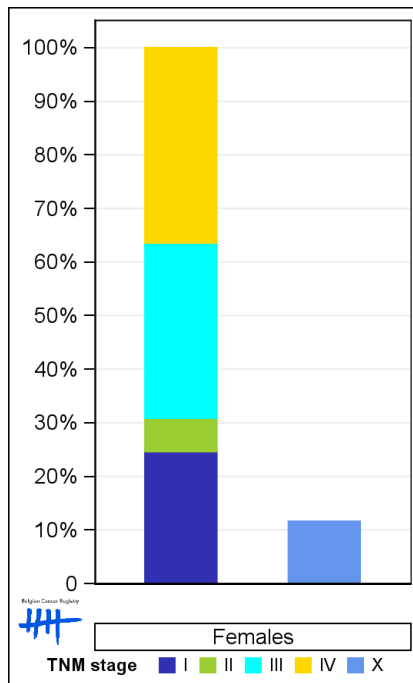
### 1.3. Combined stage

**Table 3:** Ovarian Cancer: Distribution of combined stage, Belgium 2019

	Stage I	Stage II	Stage III	Stage IV	Stage X	Stage NA	Total
<b>Females</b>							
N	150	38	199	222	80	8	697
%	21.5	5.5	28.6	31.9	11.5	1.1	100

Staging according to the TNM 8th edition (Ref: Brierley JD, Gospodarowicz MK, Wittekind Ch. TNM classification of malignant tumours, UICC 8th edition)  
 Combined TNM stage : compilation of pathological (pTNM) and clinical (cTNM) stage. pTNM prevails over cTNM, except when cTNM stage is IV  
 Stage X: diagnoses with an unknown stage  
 Stage NA: diagnoses with a histological diagnosis where no stage can be evaluated (Not Applicable)

**Figure 3:** Ovarian Cancer: Bar chart of known combined stage, Belgium 2019



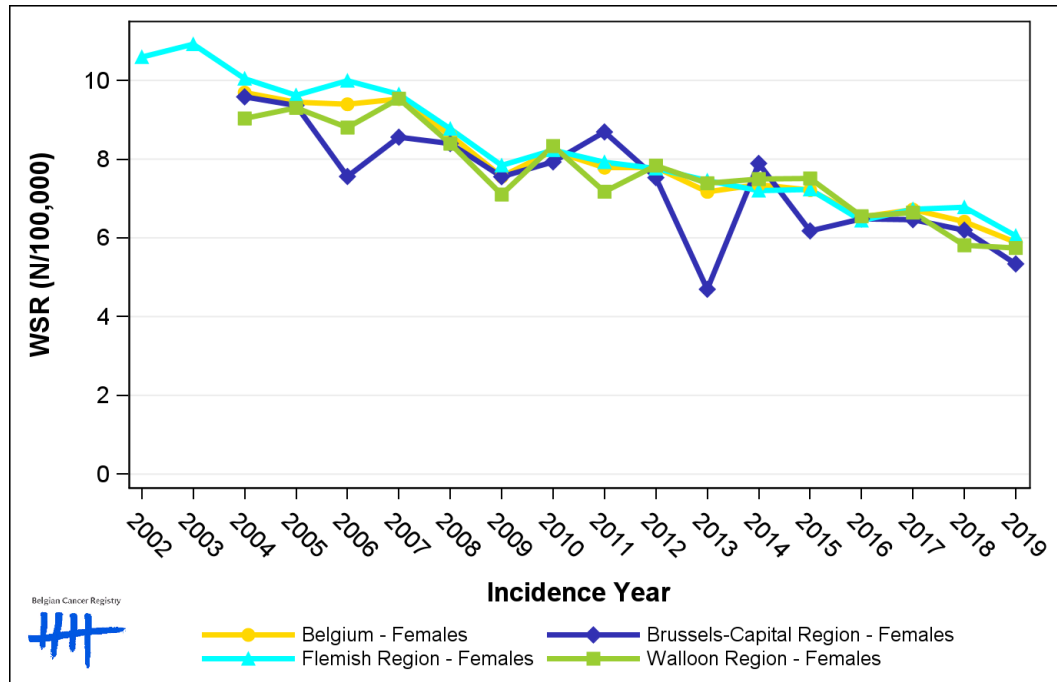
## 1.4. Trends in incidence

**Table 4:** Ovarian Cancer: Age-standardised incidence rates (WSR) and average annual percentage change (AAPC) by incidence year and region

Females	2005	2006	2007	2008	2009	2010	2011	2012	2013	2014	2015	2016	2017	2018	2019	AAPC	95% CI
<b>Belgium</b>	<b>9.4</b>	<b>9.4</b>	<b>9.5</b>	<b>8.6</b>	<b>7.6</b>	<b>8.2</b>	<b>7.8</b>	<b>7.8</b>	<b>7.2</b>	<b>7.4</b>	<b>7.2</b>	<b>6.5</b>	<b>6.7</b>	<b>6.4</b>	<b>5.9</b>	<b>-3.1</b>	<b>[-3.6; -2.6]</b>
Brussels-Capital Region	9.4	7.6	8.6	8.4	7.6	7.9	8.7	7.5	4.7	7.9	6.2	6.5	6.5	6.2	5.3	-3.1	[-4.8; -1.4]
Flemish Region	9.6	10.0	9.6	8.8	7.8	8.2	7.9	7.8	7.5	7.2	7.2	6.4	6.7	6.8	6.1	-3.2	[-3.7; -2.7]
Walloon Region	9.3	8.8	9.5	8.4	7.1	8.3	7.2	7.8	7.4	7.5	7.5	6.6	6.6	5.8	5.7	-3.1	[-3.9; -2.2]

WSR=Age-Standardised Rate, using the World Standard Population (N/100,000 person-years)  
 AAPC = Average Annual Percentage Change over the 2005-2019 period

**Figure 4:** Ovarian Cancer: Age-standardised incidence rates (WSR) by incidence year and region



## 1.5. Incidence by broad age groups

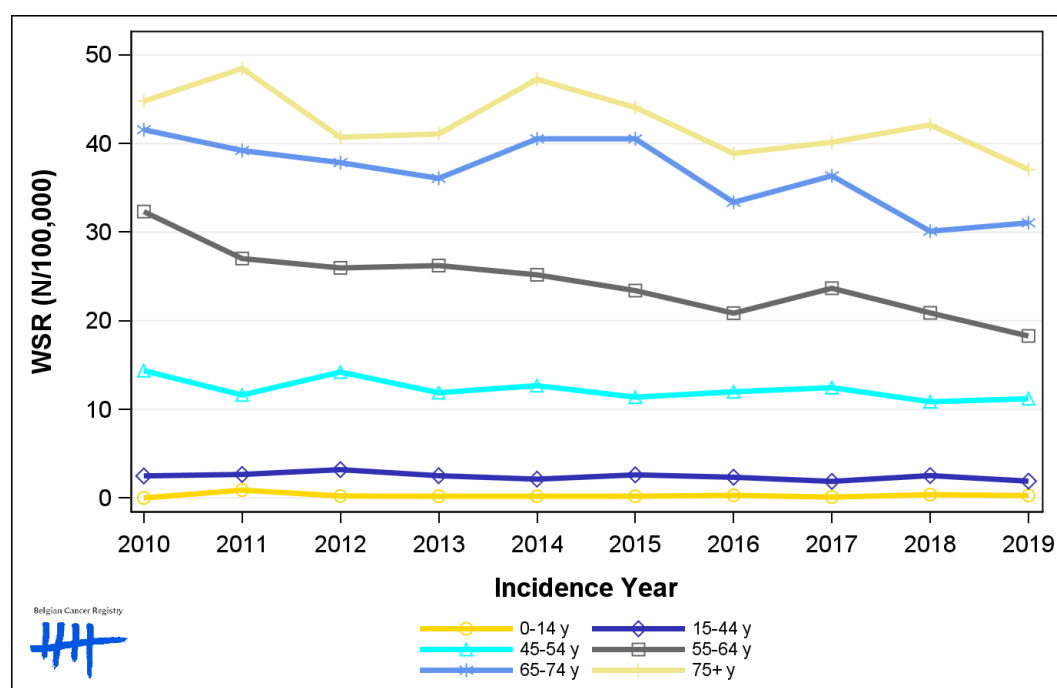
**Table 5:** Ovarian Cancer: Number of new diagnoses and age-standardised incidence rates (WSR) by broad age groups and incidence year, Belgium

	N										WSR									
	2010	2011	2012	2013	2014	2015	2016	2017	2018	2019	2010	2011	2012	2013	2014	2015	2016	2017	2018	2019
<b>Females</b>																				
All ages	858	824	799	772	827	802	723	769	739	697	8.2	7.8	7.8	7.2	7.4	7.2	6.5	6.7	6.4	5.9
0-14 y	0	9	2	2	2	2	3	1	4	3	0.0	0.9	0.2	0.2	0.2	0.2	0.3	<0.1	0.4	0.3
15-44 y	59	62	71	61	50	60	54	45	62	44	2.5	2.7	3.2	2.5	2.1	2.6	2.3	1.9	2.5	1.9
45-54 y	116	94	116	98	102	93	97	100	88	91	14.4	11.6	14.2	11.9	12.7	11.4	12.0	12.5	10.9	11.2
55-64 y	214	183	178	181	176	165	151	172	154	138	32.3	27.0	26.0	26.2	25.2	23.4	20.9	23.7	20.9	18.3
65-74 y	207	196	192	187	214	219	185	211	179	191	41.6	39.2	37.9	36.1	40.5	40.5	33.4	36.4	30.1	31.1
75+ y	262	280	240	243	283	263	233	240	252	230	44.8	48.5	40.7	41.1	47.3	44.1	38.9	40.2	42.1	37.1

N=Number of invasive tumours

WSR=Age-Standardised Rate, using the World Standard Population (N/100,000 person-years)

**Figure 5:** Ovarian Cancer: Age-standardised incidence rates (WSR) versus incidence year by broad age groups, Belgium



Belgian Cancer Registry

Legend:  
 0-14 y (yellow circle)  
 15-44 y (dark blue diamond)  
 45-54 y (cyan triangle)  
 55-64 y (grey square)  
 65-74 y (light blue asterisk)  
 75+ y (yellow plus)

## 2. Relative survival

**Table 6:** Ovarian Cancer: 5-year relative survival proportion by age group and region, Belgium 2015-2019

	5-year relative survival 2015-2019 (%)		
	Females		
	N at risk	estimate	95% CI
<b>Overall</b>	3,700	47.7	[45.5, 50.0]
<b>Age group</b>			
15-44 years	262	79.0	[71.4, 84.7]
45-69 years	1,709	57.5	[54.3, 60.6]
70+ years	1,729	32.0	[28.7, 35.4]
<b>Region</b>			
Brussels-Capital Region	287	51.4	[42.8, 59.8]
Flemish Region	2,276	48.9	[46.1, 51.8]
Walloon Region	1,137	44.5	[40.5, 48.5]

**Figure 6:** Ovarian Cancer: relative survival proportion, Belgium 2015-2019

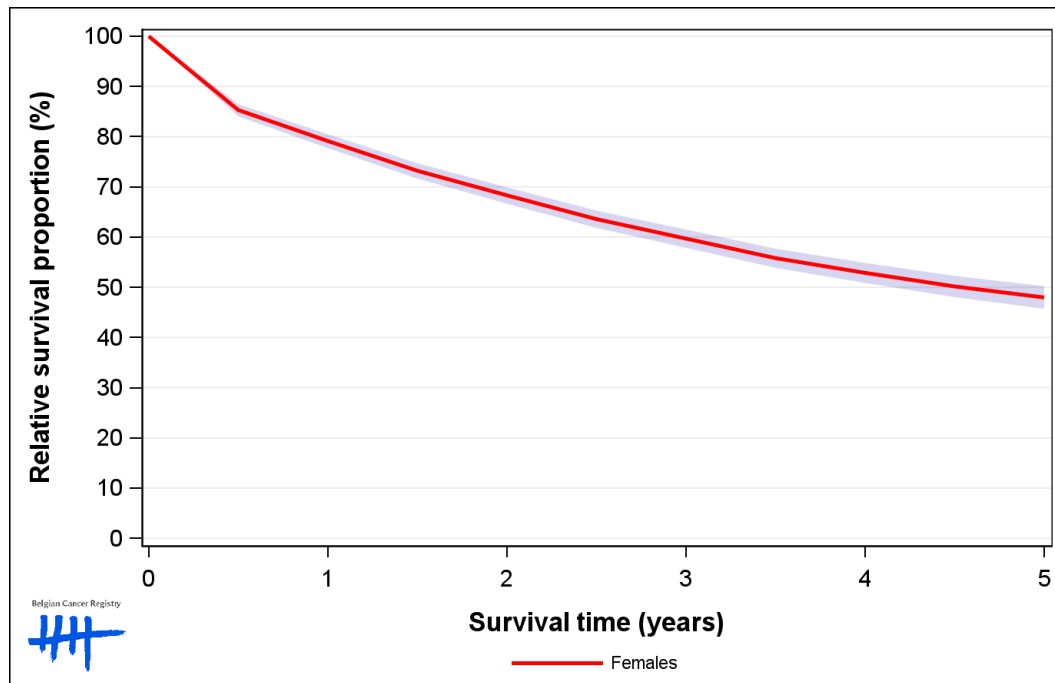


Figure 7: Ovarian Cancer: relative survival proportion by age group, Belgium 2015-2019

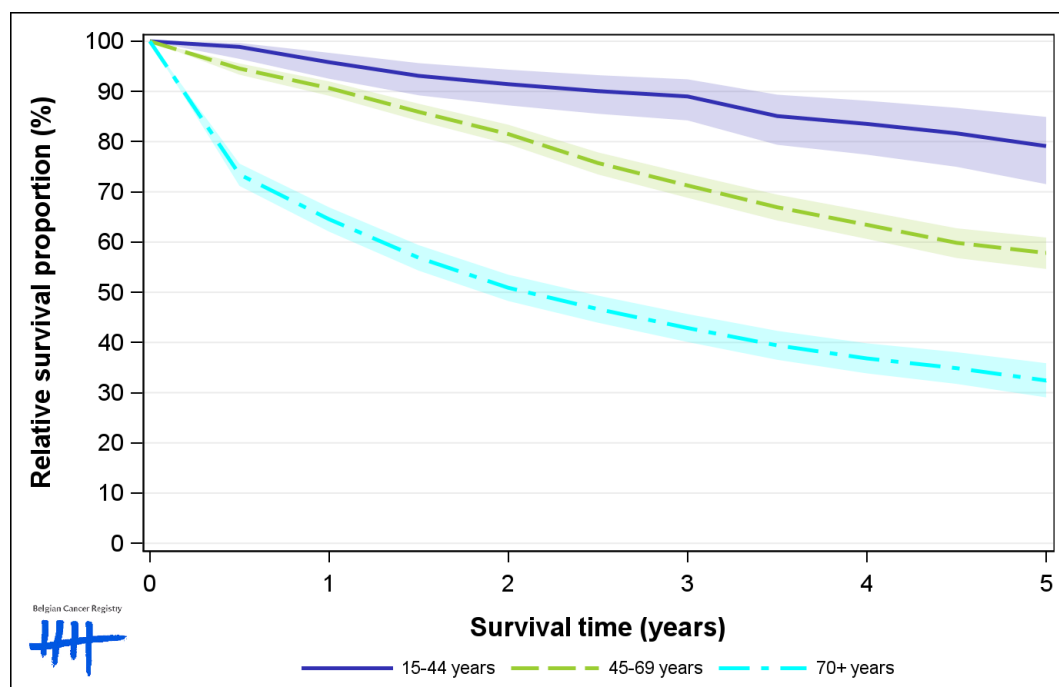


Figure 8: Ovarian Cancer: relative survival proportion by region, Belgium 2015-2019

