

Belgian Cancer Registry



# Cancer Fact Sheet **Corpus Uteri Cancer**

ICD10 : C54

**Belgium 2019**

# 1. Cancer Incidence

## 1.1. Number of new diagnoses and incidence rates

**Table 1:** Corpus Uteri Cancer: Average age at diagnosis, number of new cancer diagnoses (N), crude rate (CR), age-standardised incidence rates (ESR and WSR) and cumulative risk by region, 2019

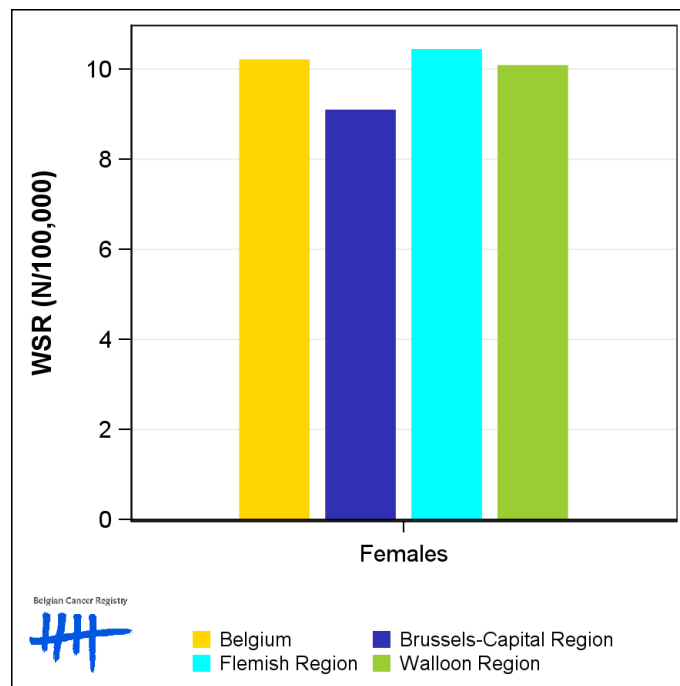
Females	Age (years)	N	CR	ESR	WSR	CRi
<b>Belgium</b>	<b>69.9</b>	<b>1,343</b>	<b>23.1</b>	<b>14.9</b>	<b>10.2</b>	<b>1.30</b>
Brussels-Capital Region	69.4	95	15.4	13.0	9.1	1.09
Flemish Region	70.2	833	25.0	15.3	10.4	1.32
Walloon Region	69.2	415	22.3	14.6	10.1	1.31

CR=Crude (all ages) Rate (N/100,000 person-years)  
 ESR (1976)=Age-Standardised Rate, using the European Standard Population (N/100,000 person-years)  
 WSR=Age-Standardised Rate, using the World Standard Population (N/100,000 person-years)  
 CRi=Cumulative Risk for 0-74 years (%)

Belgian Cancer Registry



**Figure 1:** Corpus Uteri Cancer: Age-standardised incidence rates by region, 2019



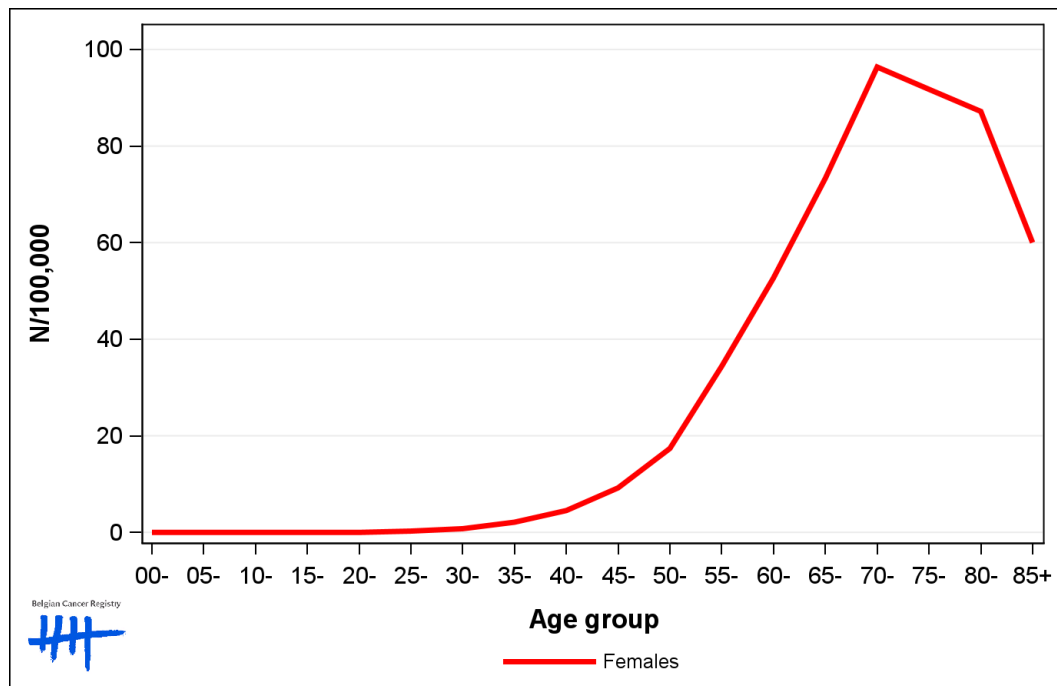
## 1.2. Age-specific incidence rates

**Table 2:** Corpus Uteri Cancer: Age-specific incidence rates, crude rate (CR) and age-standardised incidence rates (ESR and WSR), Belgium 2019

	00-	05-	10-	15-	20-	25-	30-	35-	40-	45-	50-	55-	60-	65-	70-	75-	80-	85+	CR	ESR	WSR
Females	0.0	0.0	0.0	0.0	0.0	0.5	0.5	2.1	5.0	8.3	14.4	31.9	46.1	66.9	85.6	94.2	73.8	66.4	23.1	14.9	10.2

CR=Crude (all ages) Rate (N/100,000 person-years)  
 ESR (1976)=Age-Standardised Rate, using the European Standard Population (N/100,000 person-years)  
 WSR=Age-Standardised Rate, using the World Standard Population (N/100,000 person-years)

**Figure 2:** Corpus Uteri Cancer: Age-specific incidence rates, 2015-2019



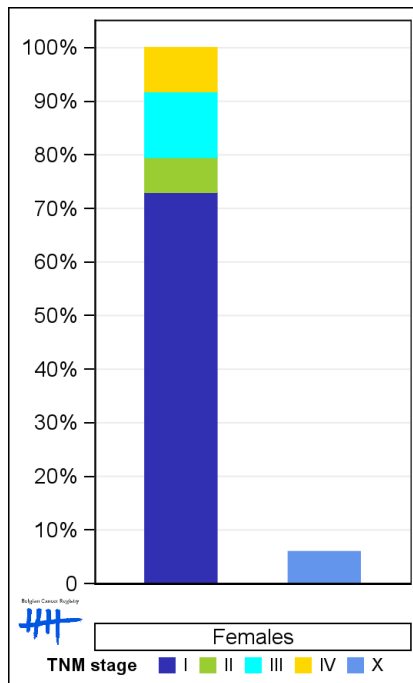
### 1.3. Combined stage

**Table 3:** Corpus Uteri Cancer: Distribution of combined stage, Belgium 2019

	Stage I	Stage II	Stage III	Stage IV	Stage X	Stage NA	Total
<b>Females</b>							
N	858	77	144	96	74	94	1,343
%	63.9	5.7	10.7	7.1	5.5	7.0	100

Staging according to the TNM 8th edition (Ref: Brierley JD, Gospodarowicz MK, Wittekind Ch. TNM classification of malignant tumours, UICC 8th edition)  
 Combined TNM stage : compilation of pathological (pTNM) and clinical (cTNM) stage. pTNM prevails over cTNM, except when cTNM stage is IV  
 Stage X: diagnoses with an unknown stage  
 Stage NA: diagnoses with a histological diagnosis where no stage can be evaluated (Not Applicable)

**Figure 3:** Corpus Uteri Cancer: Bar chart of known combined stage, Belgium 2019



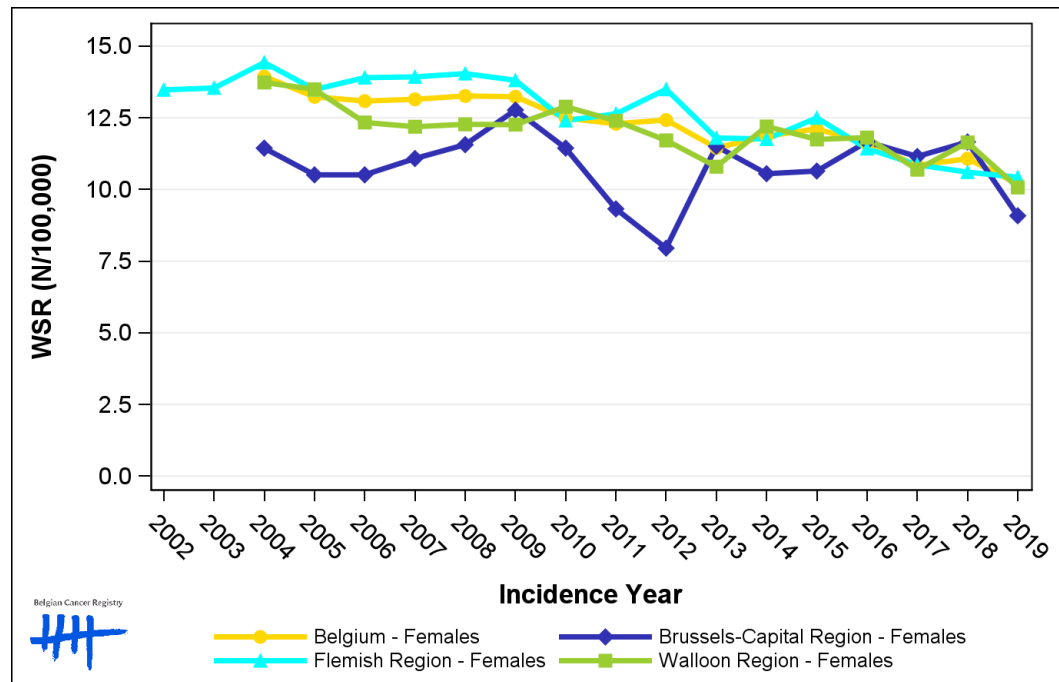
## 1.4. Trends in incidence

**Table 4:** Corpus Uteri Cancer: Age-standardised incidence rates (WSR) and average annual percentage change (AAPC) by incidence year and region

Females	2005	2006	2007	2008	2009	2010	2011	2012	2013	2014	2015	2016	2017	2018	2019	AAPC	95% CI
<b>Belgium</b>	13.2	13.1	13.1	13.3	13.2	12.5	12.3	12.4	11.5	11.9	12.1	11.6	10.8	11.1	10.2	-1.7	[-2.1; -1.3]
Brussels-Capital Region	10.5	10.5	11.1	11.6	12.8	11.4	9.3	8.0	11.5	10.6	10.6	11.7	11.2	11.7	9.1	-0.3	[-1.9; 1.3]
Flemish Region	13.5	13.9	13.9	14.0	13.8	12.4	12.6	13.5	11.8	11.8	12.5	11.4	10.9	10.6	10.4	-1.8	[-2.4; -1.2]
Walloon Region	13.5	12.3	12.2	12.3	12.3	12.9	12.4	11.7	10.8	12.2	11.7	11.8	10.7	11.6	10.1	-1.3	[-1.9; -0.6]

WSR=Age-Standardised Rate, using the World Standard Population (N/100,000 person-years)  
 AAPC = Average Annual Percentage Change over the 2005-2019 period

**Figure 4:** Corpus Uteri Cancer: Age-standardised incidence rates (WSR) by incidence year and region



## 1.5. Incidence by broad age groups

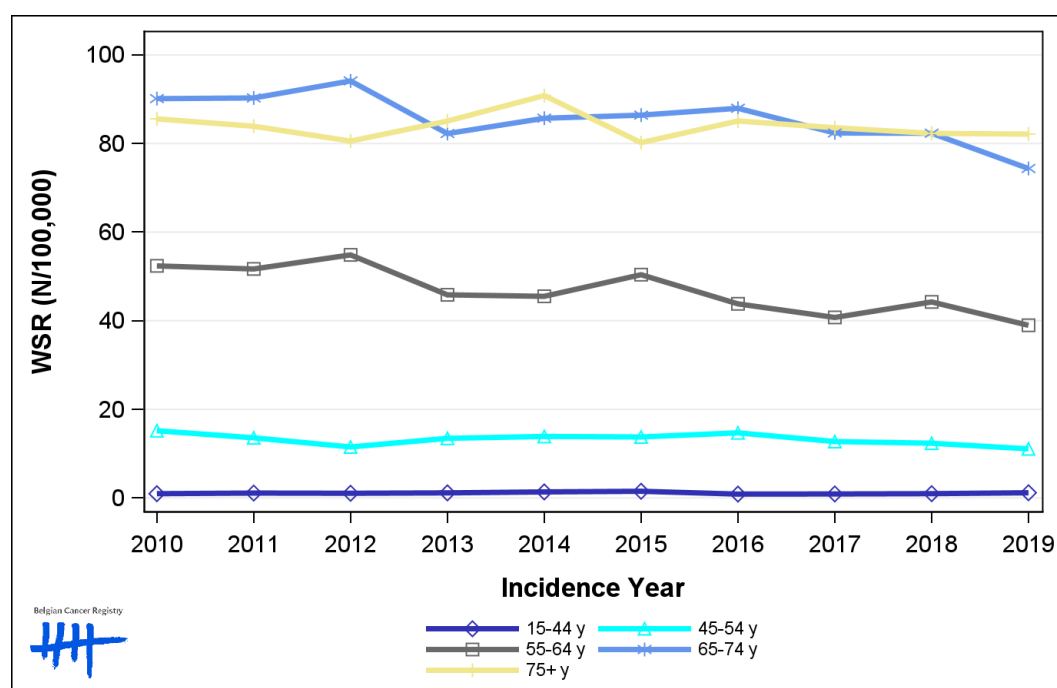
**Table 5:** Corpus Uteri Cancer: Number of new diagnoses and age-standardised incidence rates (WSR) by broad age groups and incidence year, Belgium

	N										WSR									
	2010	2011	2012	2013	2014	2015	2016	2017	2018	2019	2010	2011	2012	2013	2014	2015	2016	2017	2018	2019
<b>Females</b>																				
All ages	1,418	1,428	1,448	1,387	1,460	1,457	1,440	1,398	1,432	1,343	12.5	12.3	12.4	11.5	11.9	12.1	11.6	10.8	11.1	10.2
0-14 y	0	0	0	0	0	0	0	0	0	0	0.0	0.0	0.0	0.0	0.0	0.0	0.0	0.0	0.0	0.0
15-44 y	26	28	27	28	35	40	23	23	25	30	1.0	1.1	1.1	1.1	1.4	1.5	0.9	0.9	1.0	1.2
45-54 y	122	111	95	112	116	115	120	106	99	89	15.2	13.6	11.5	13.5	13.9	13.8	14.7	12.7	12.4	11.1
55-64 y	346	351	375	315	315	356	313	297	326	292	52.4	51.7	54.9	45.8	45.5	50.4	43.8	40.7	44.2	39.0
65-74 y	438	454	478	426	453	465	488	476	493	453	90.1	90.3	94.1	82.3	85.7	86.4	88.0	82.4	82.3	74.4
75+ y	486	484	473	506	541	481	496	496	489	479	85.6	83.9	80.6	85.1	90.8	80.2	85.1	83.6	82.3	82.1

N=Number of invasive tumours

WSR=Age-Standardised Rate, using the World Standard Population (N/100,000 person-years)

**Figure 5:** Corpus Uteri Cancer: Age-standardised incidence rates (WSR) versus incidence year by broad age groups, Belgium



Belgian Cancer Registry

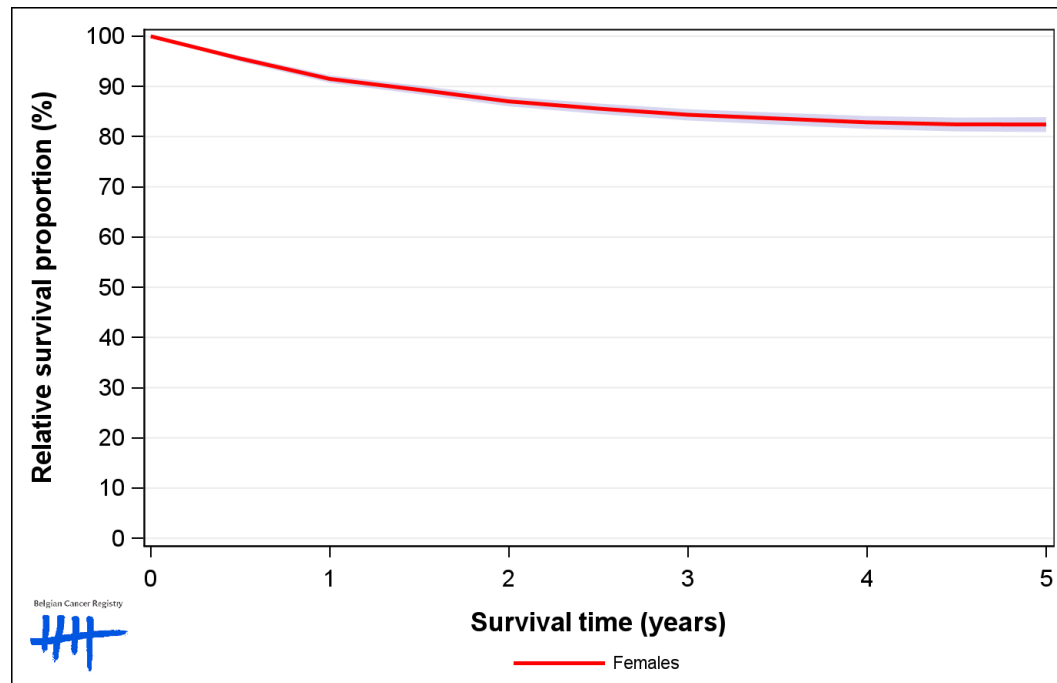
Legend:  
 15-44 y (dark blue diamond)  
 45-54 y (cyan triangle)  
 55-64 y (grey square)  
 65-74 y (blue asterisk)  
 75+ y (yellow plus)

## 2. Relative survival

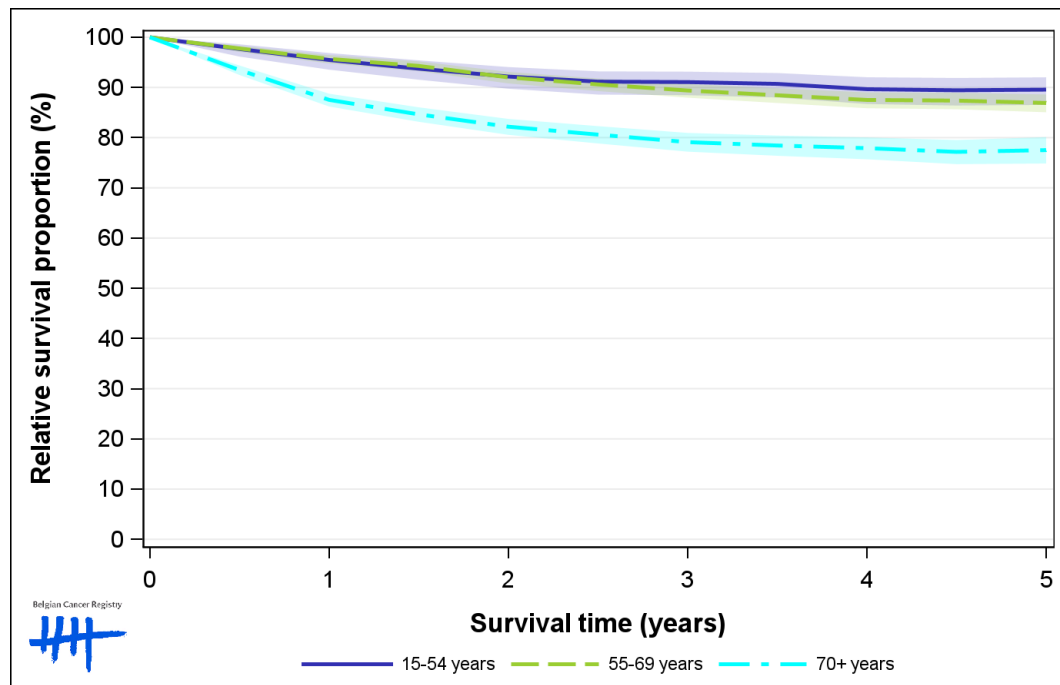
**Table 6:** Corpus Uteri Cancer: 5-year relative survival proportion by age group and region, Belgium 2015-2019

	5-year relative survival 2015-2019 (%)		
	Females		
	N at risk	estimate	95% CI
<b>Overall</b>	7,025	82.4	[80.9, 83.9]
<b>Age group</b>			
15-54 years	658	89.5	[86.5, 92.0]
55-69 years	2,721	87.0	[85.2, 88.7]
70+ years	3,646	77.3	[74.6, 79.9]
<b>Region</b>			
Brussels-Capital Region	536	81.6	[76.0, 86.7]
Flemish Region	4,231	83.2	[81.3, 85.0]
Walloon Region	2,258	81.1	[78.3, 83.8]

**Figure 6:** Corpus Uteri Cancer: relative survival proportion, Belgium 2015-2019



**Figure 7:** Corpus Uteri Cancer: relative survival proportion by age group, Belgium 2015-2019



**Figure 8:** Corpus Uteri Cancer: relative survival proportion by region, Belgium 2015-2019

