



Belgian Cancer Registry



academic session

3/12/2018

13 Years Belgian Cancer Registry

Cancer in an Ageing Population

Lien van Walle

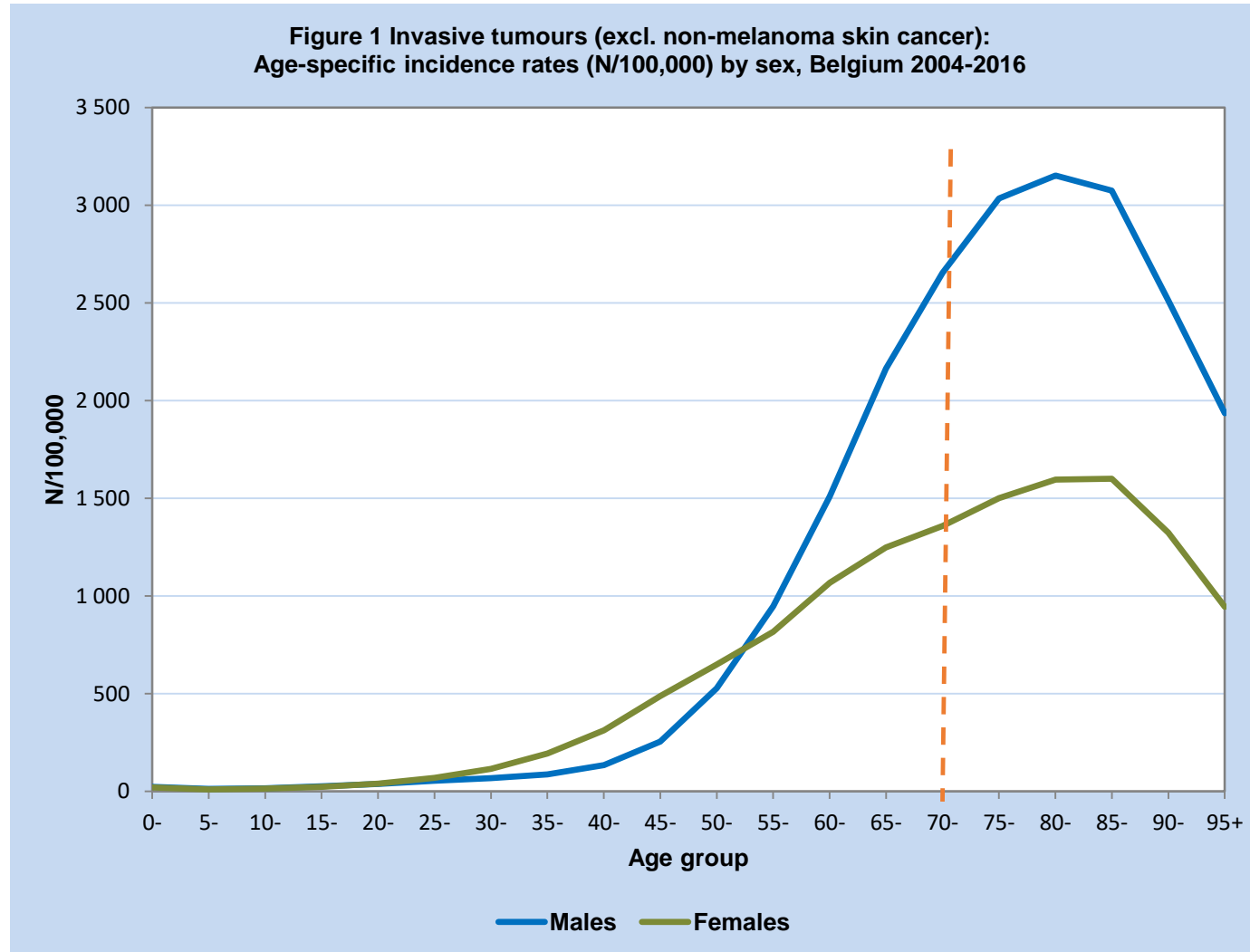


Structure of the publication

1. Introduction
2. Availability and quality of incidence data in the older population
3. Cancer burden in an ageing population
4. Capita Selecta
5. Appendix



Is cancer incidence higher in the older population?



46 %
of total
incidence in
70+



What are the largest tumour-related differences according to age?

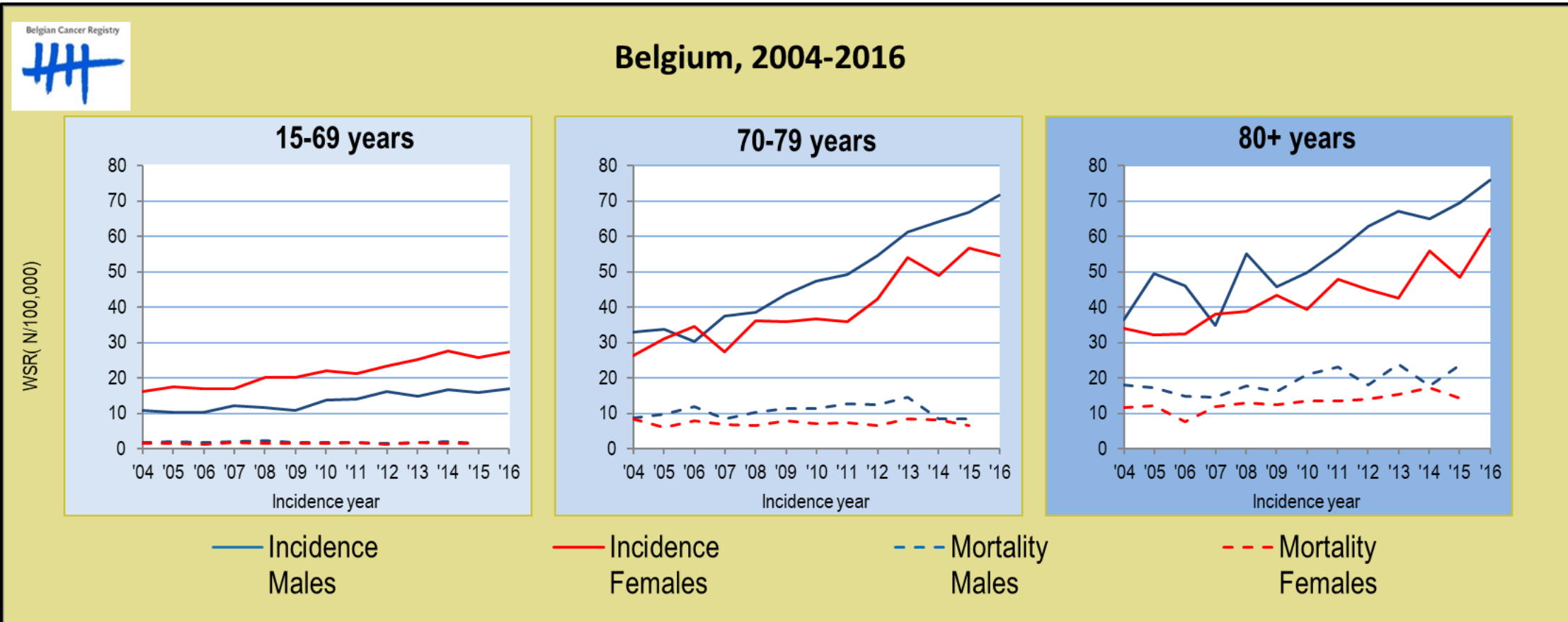
Common cancers	More/less frequent in older people
Colon	Stomach ↑
Rectum	Bladder ↑
Lung	Head & Neck ↓
Breast	Melanoma ↓
Prostate	Thyroid ↓
	Cervix uteri ↓

- 15-69 years
- 70-79 years
- 80+ years

Incidence Mortality Prevalence Survival



Trends in incidence & mortality : melanoma

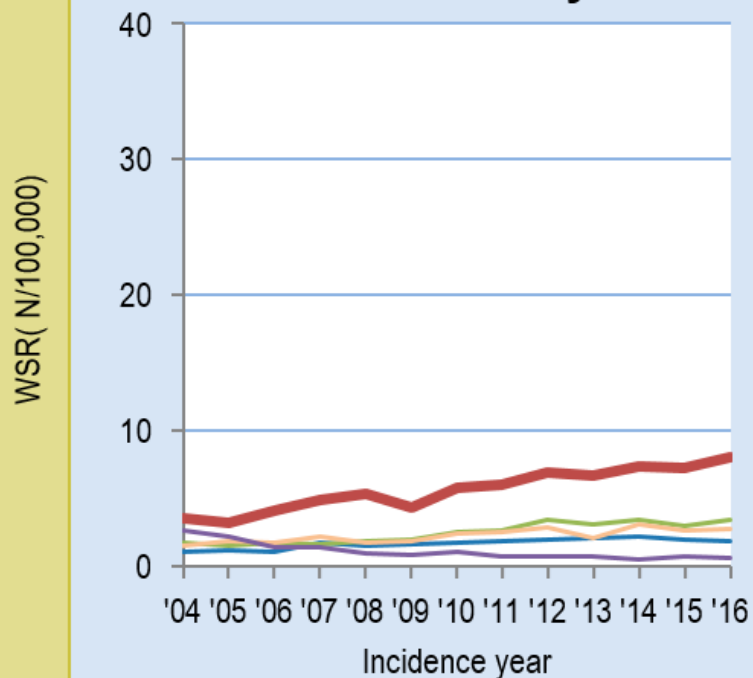


Trends in incidence by localisation : melanoma

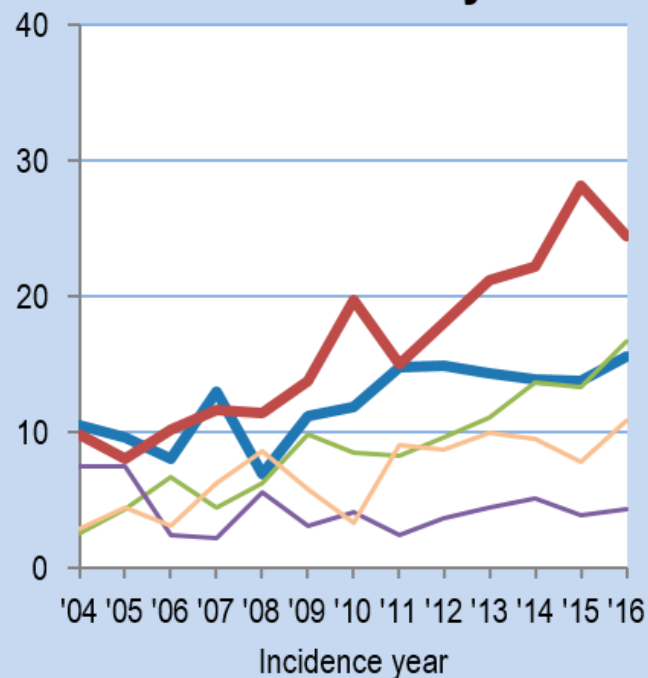


Belgium, 2004-2016

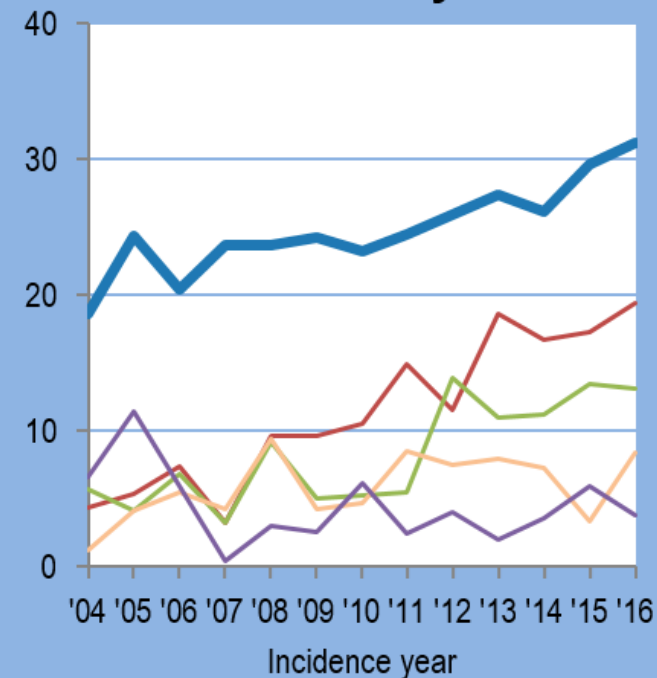
Males: 15-69 years



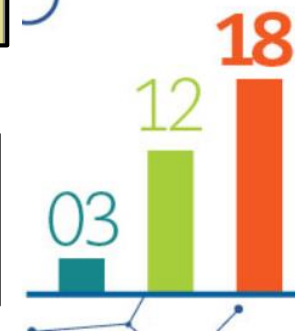
Males: 70-79 years



Males: 80+ years



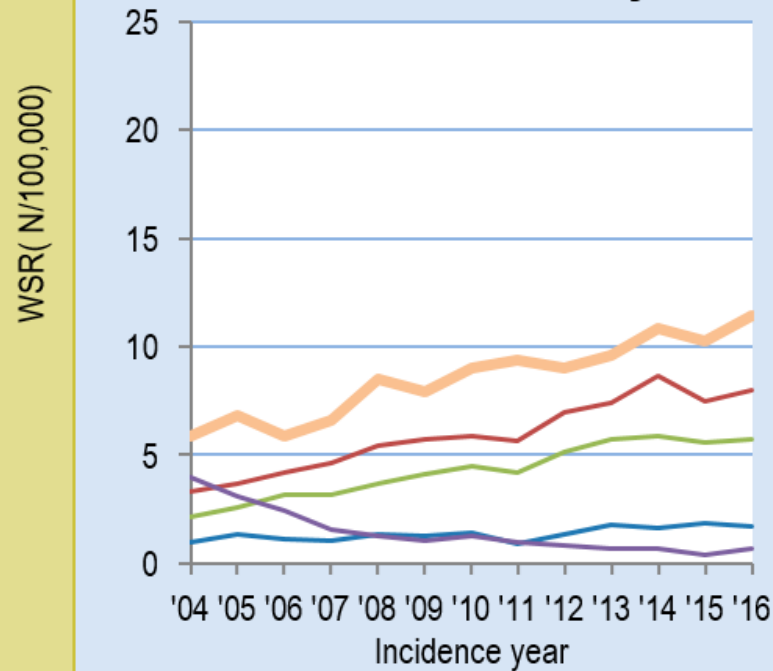
— Head — Trunk — Upper limbs — Lower limbs — Unspecified



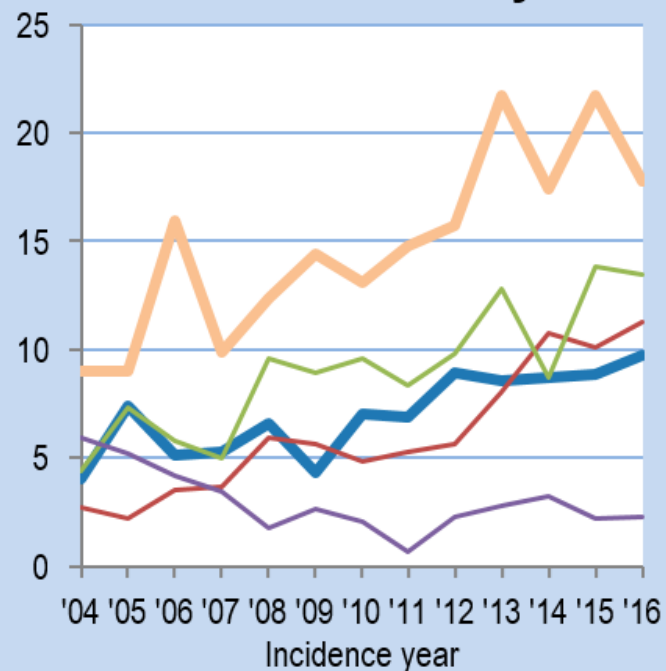
Trends in incidence by localisation : melanoma

Belgium, 2004-2016

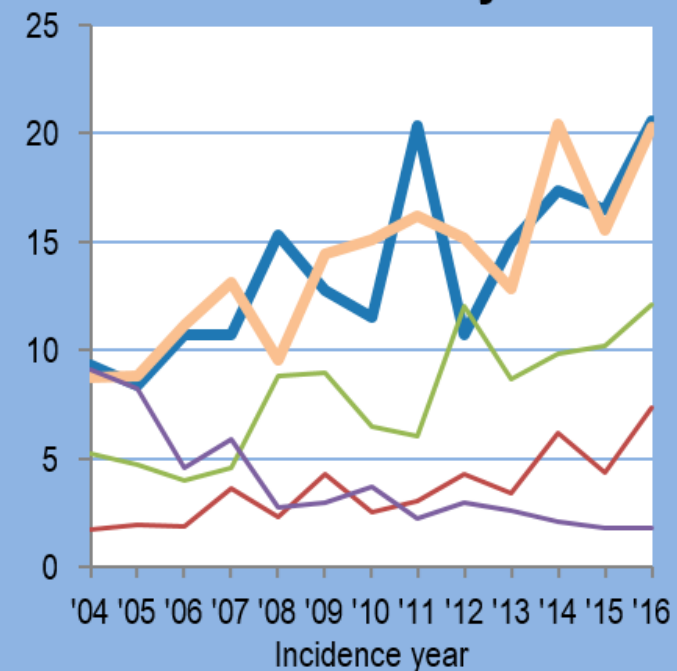
Females: 15-69 years



Females: 70-79 years



Females: 80+ years

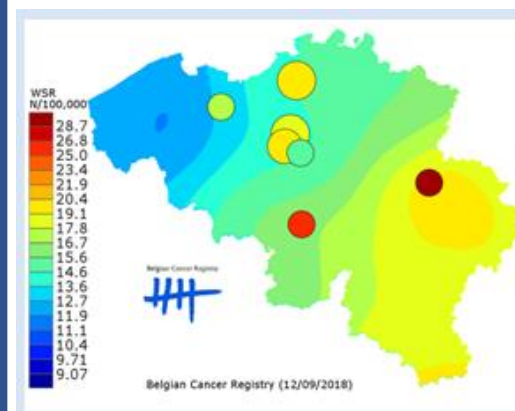
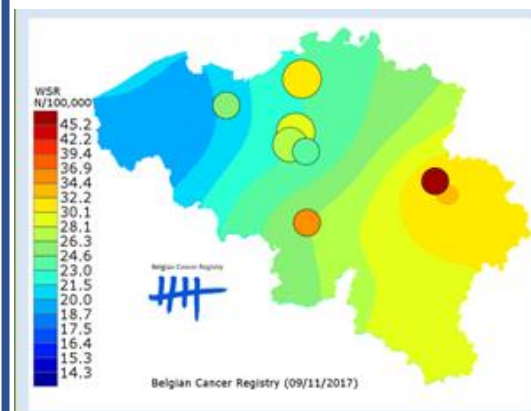


— Head — Trunk — Upper limbs — Lower limbs — Unspecified

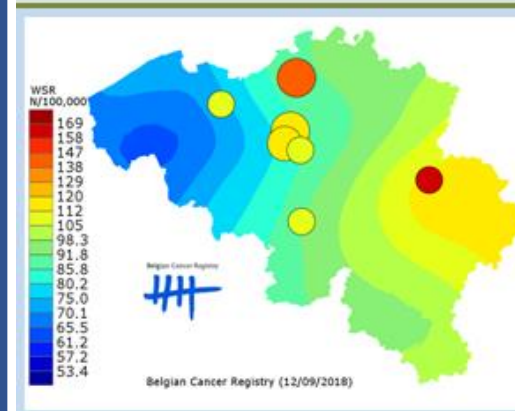
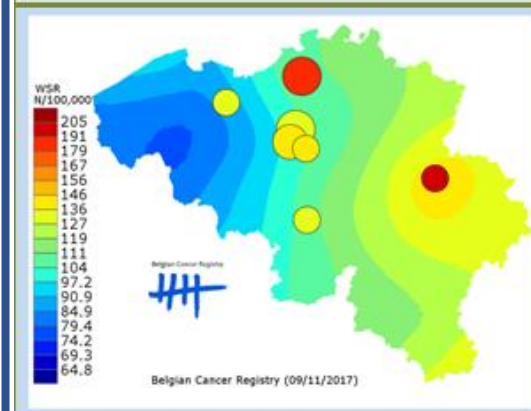


Trends in incidence & mortality : lung

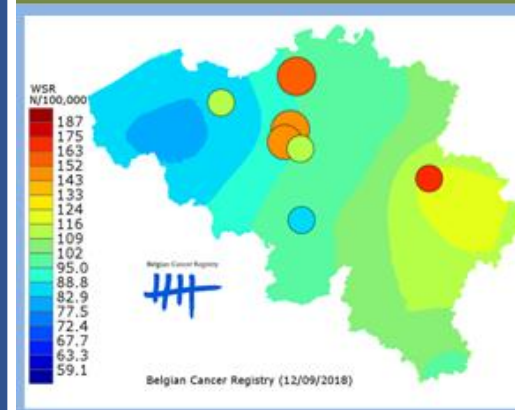
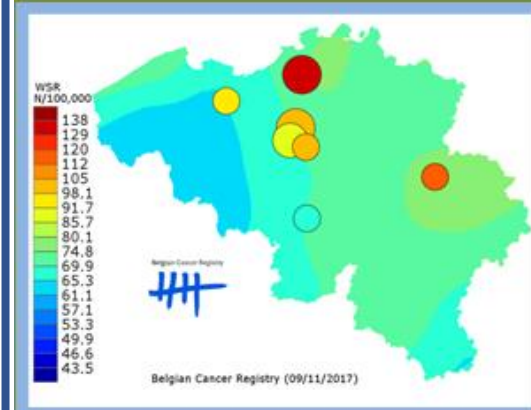
F 15-69 y



F 70-79 y



F 80+ y

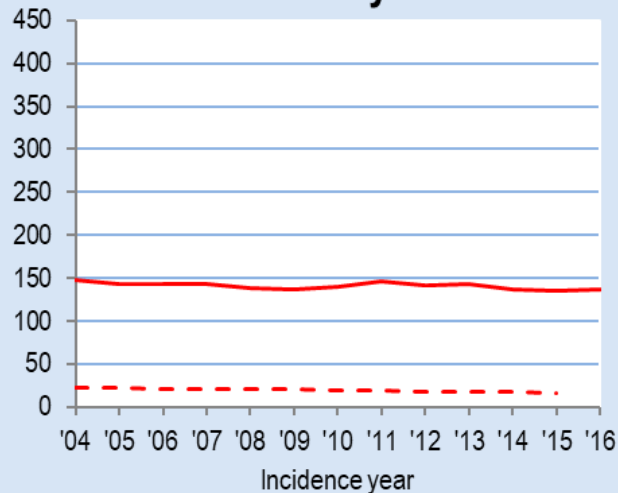


Trends in incidence & mortality : breast

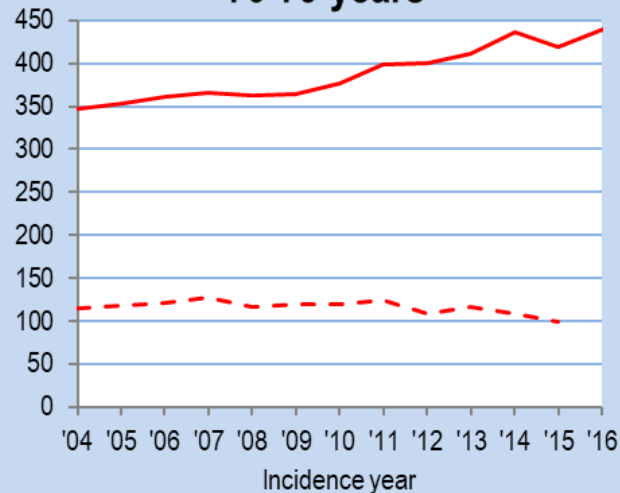


Belgium 2004-2016

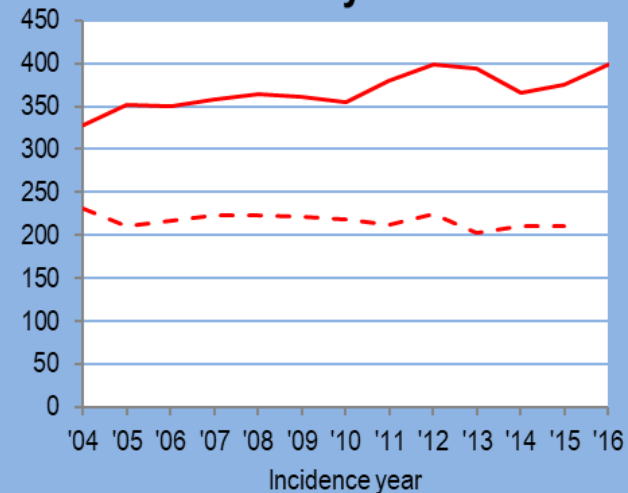
15-69 years



70-79 years

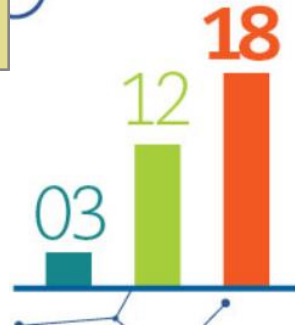


80+ years

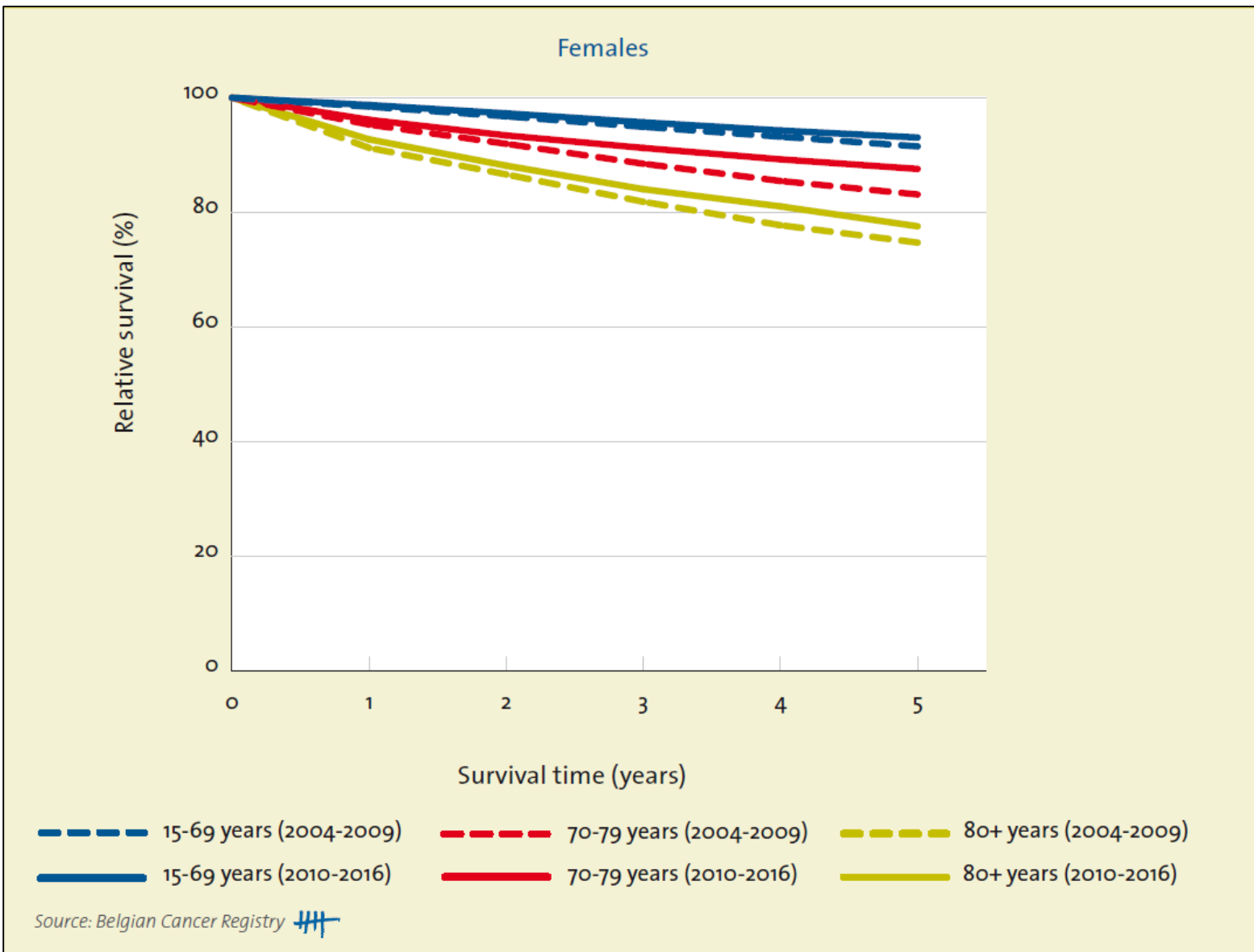


— Incidence
Females

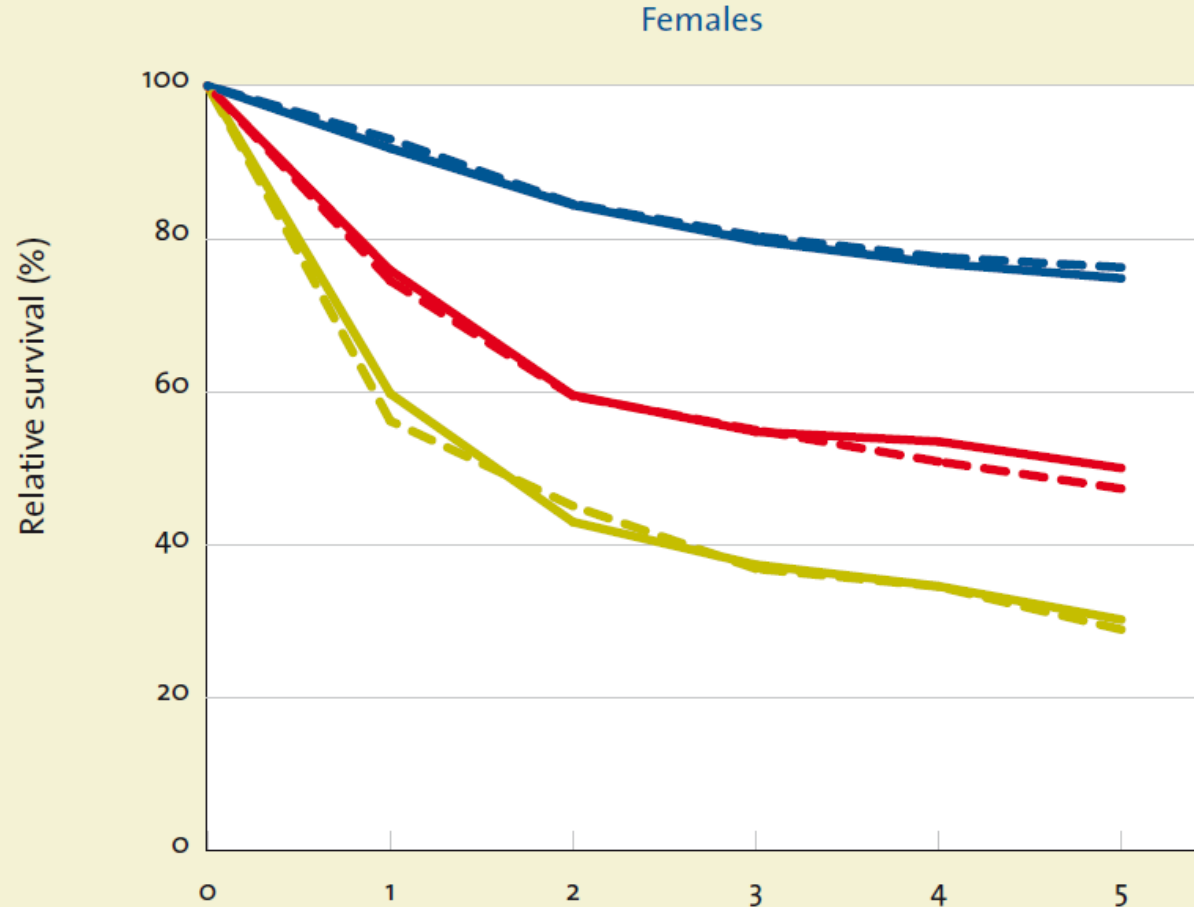
- - - Mortality
Females



Trends in relative survival: breast

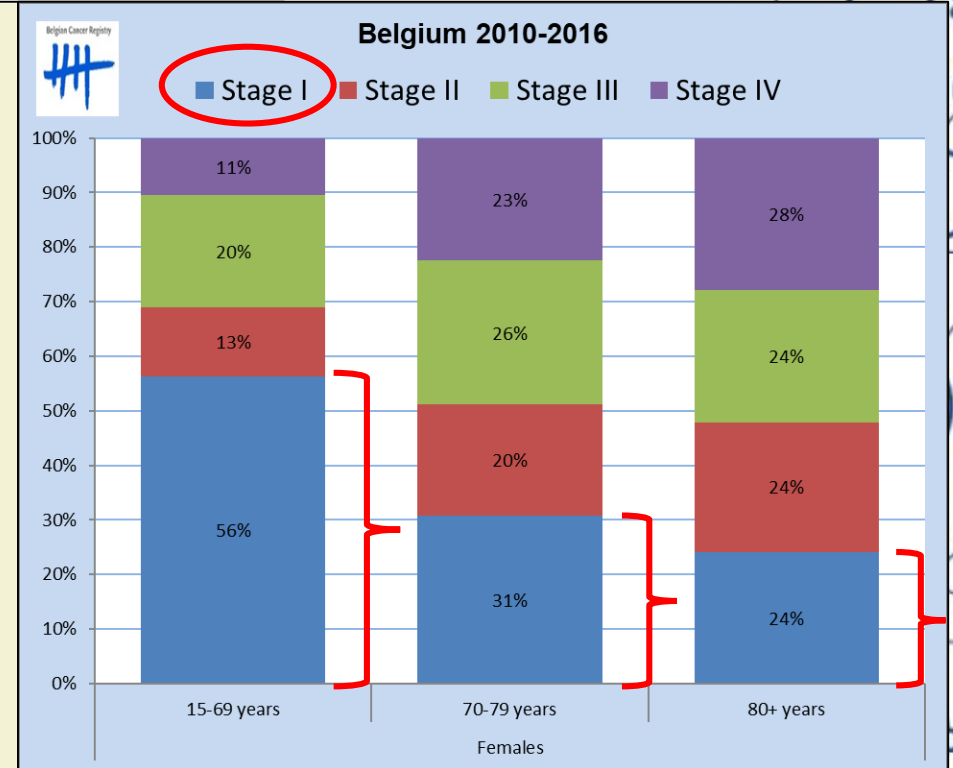


Trends relative survival : cervix



--- 15-69 years (2004-2009) --- 70-79 years (2004-2009) --- 80+ years (2004-2009)
 — 15-69 years (2010-2016) — 70-79 years (2010-2016) — 80+ years (2010-2016)

Source: Belgian Cancer Registry



Capita selecta : data flow

IMA-AIM

Belgian Cancer Registry
population-based

MZG-RCM



Capita Selecta : contents

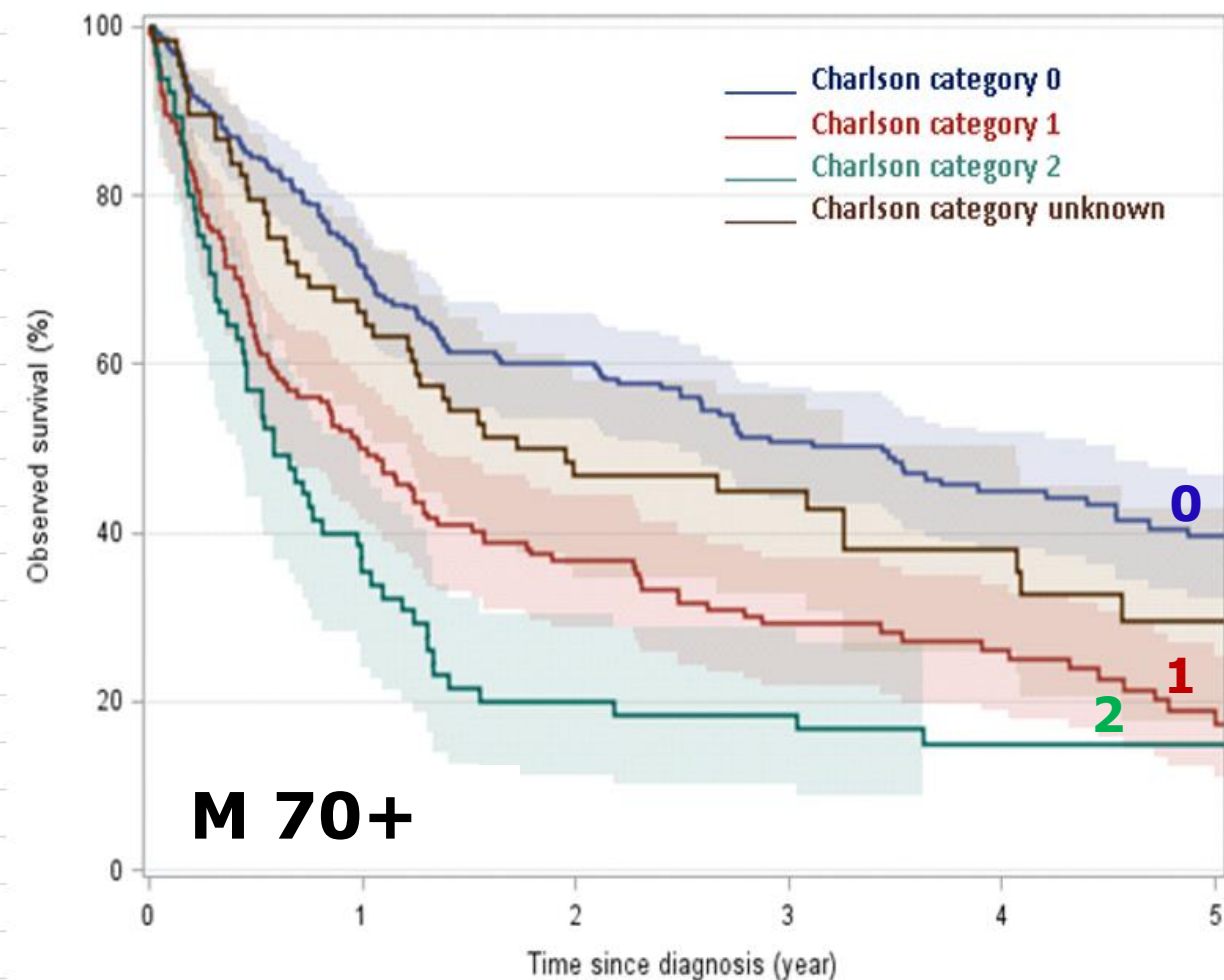
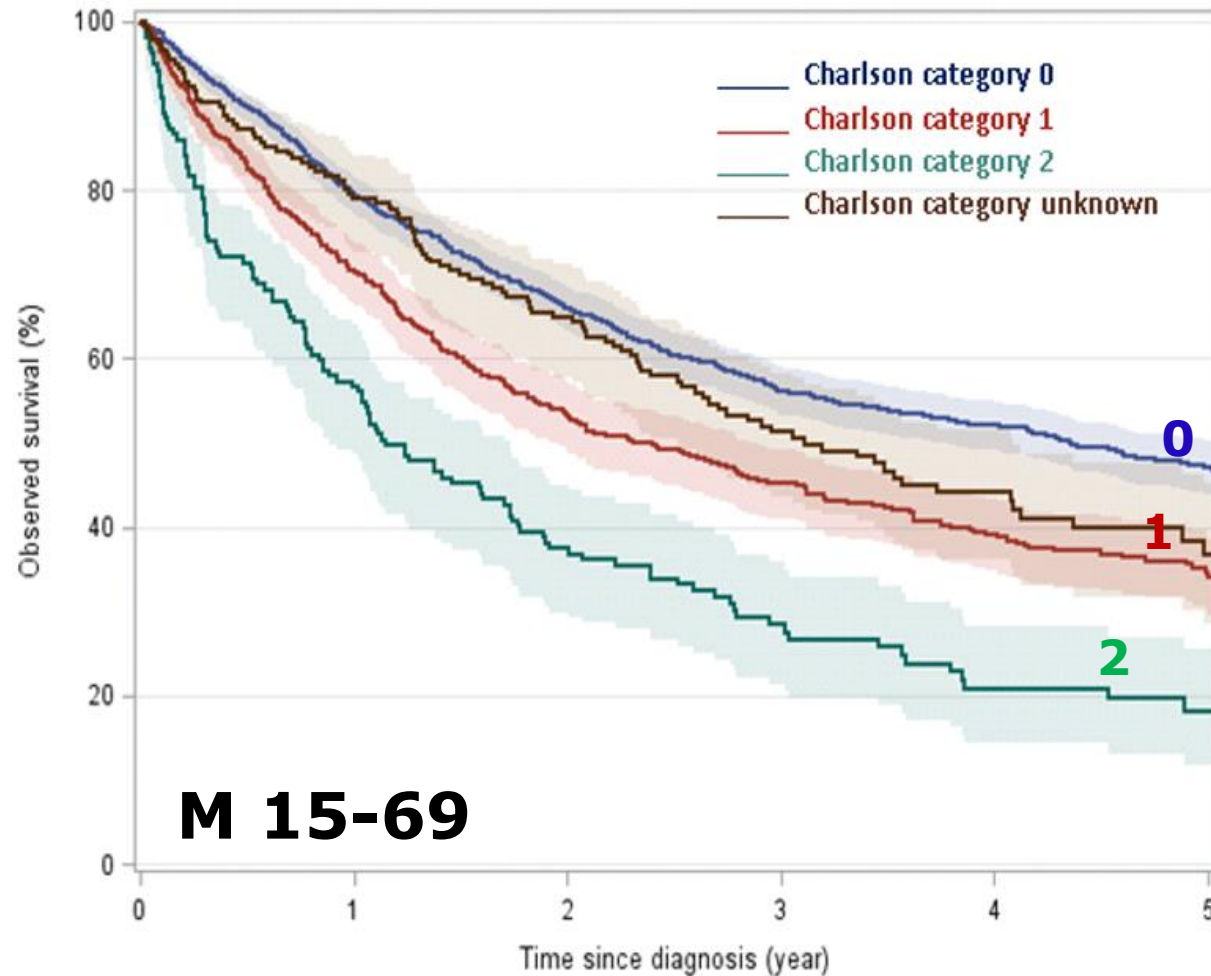
1. Patient frailty in oropharyngeal cancer: relation to age and impact on survival

Frailty measures :

- WHO performance score
- Days of hospitalization during the year prior to diagnosis
- Comorbidities: modified Charlson Comorbidity Index



Is there an impact of comorbidity on survival in oropharyngeal cancer?



Capita Selecta : contents

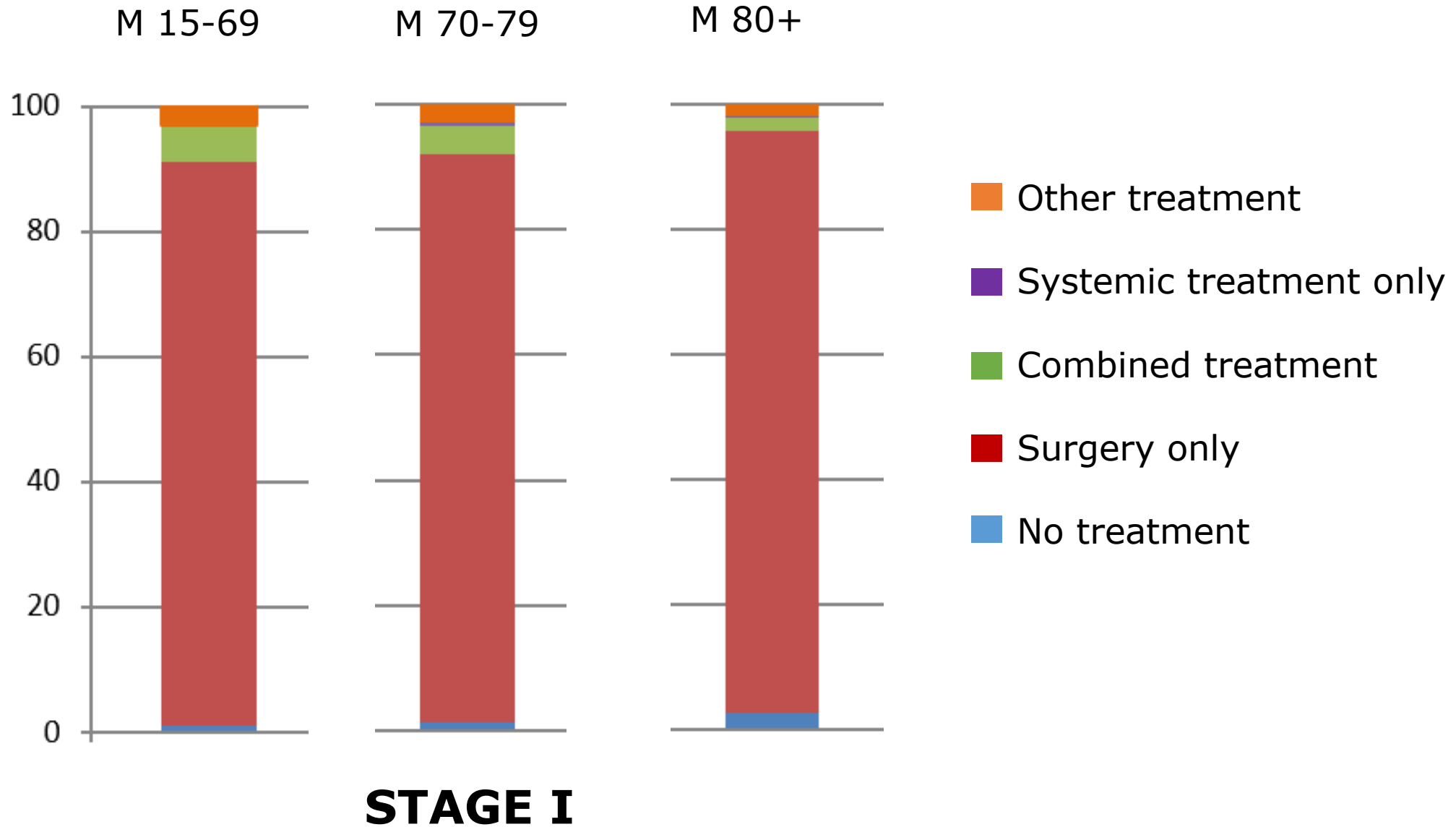
2. Colorectal cancer: Are older patients treated differently?

- **Colon** cancer
- Study period **2004-2014**
- Population-based results, by sex and age-category



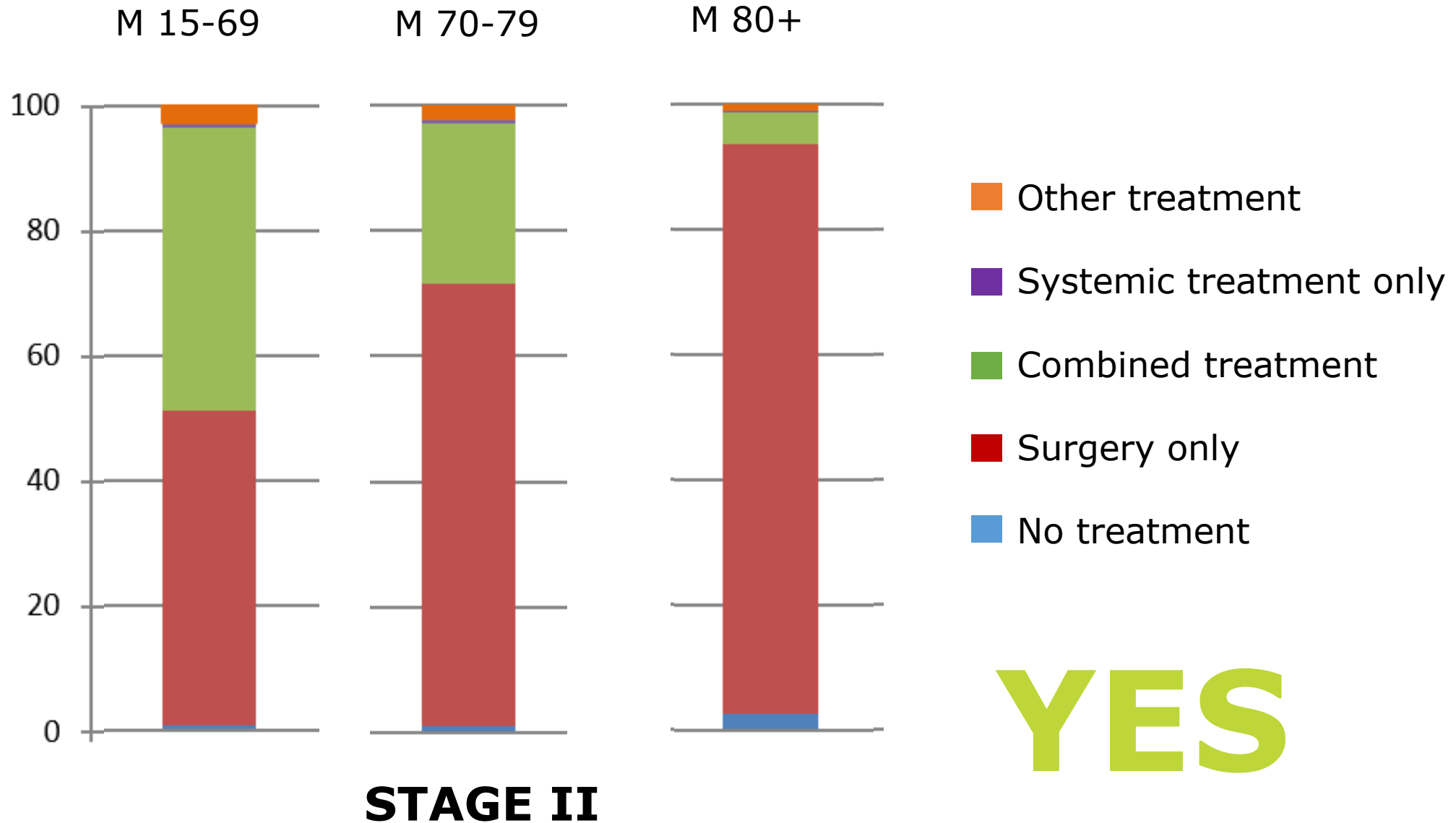
Colon cancer

Are OLDER patients treated differently?



Colon cancer

Are OLDER patients treated differently?

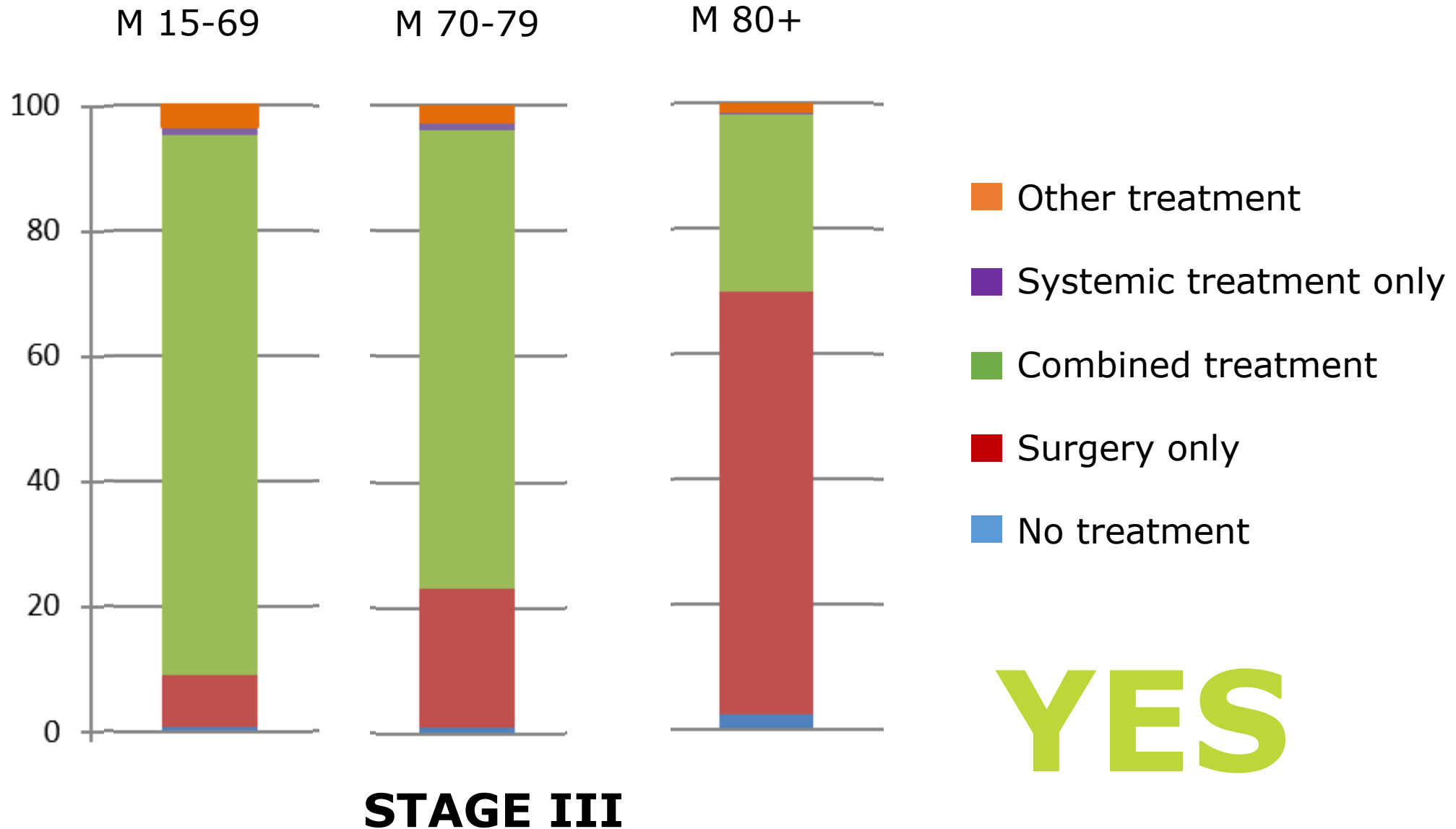


YES



Colon cancer

Are OLDER patients treated differently?

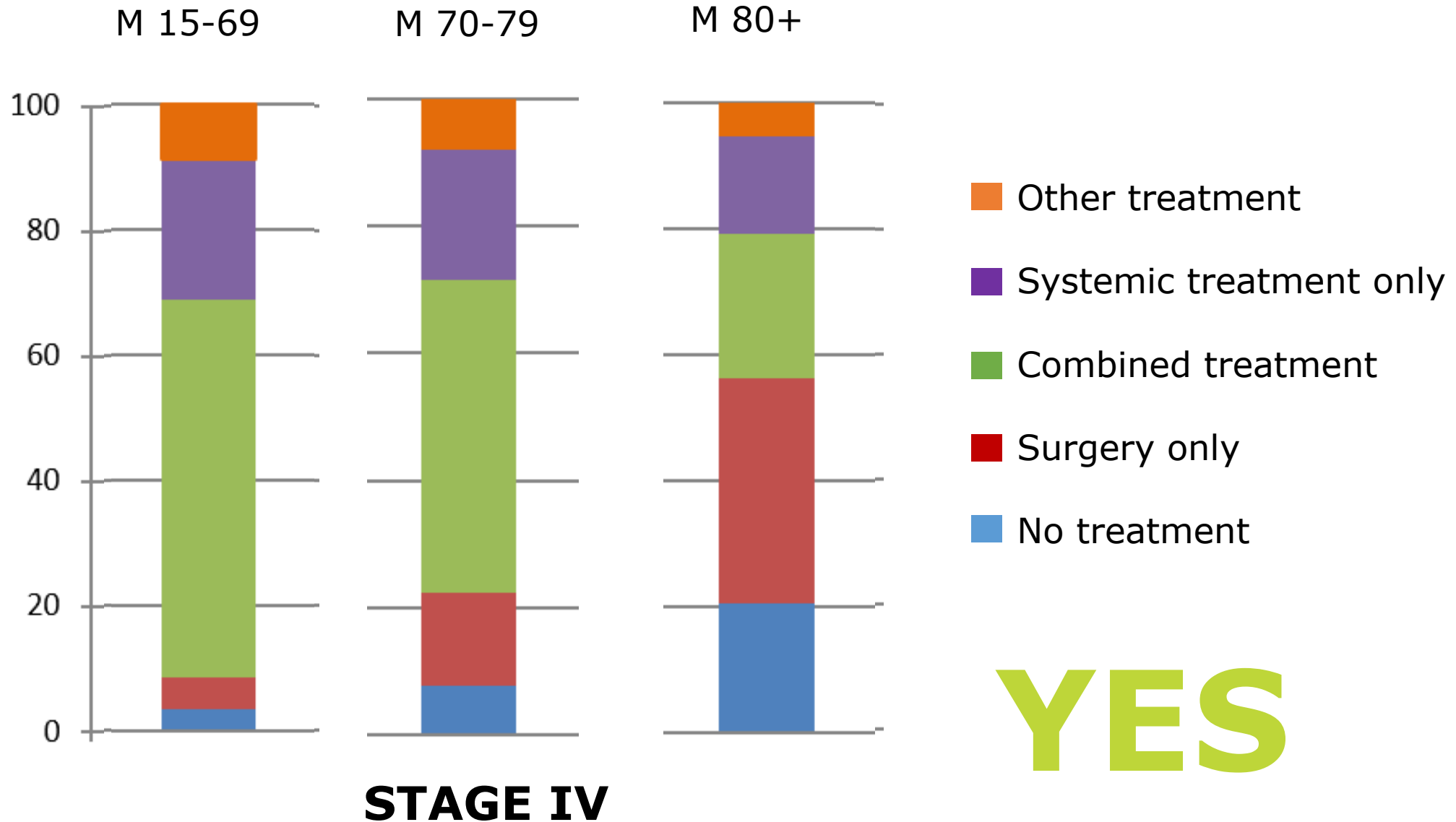


YES



Colon cancer

Are OLDER patients treated differently?



YES



AGE ...



Belgian Cancer Registry



<https://kankerregister.org/Publications>

Cancer in an Ageing Population

Belgium 2004-2016

